
IP Camera User Manual

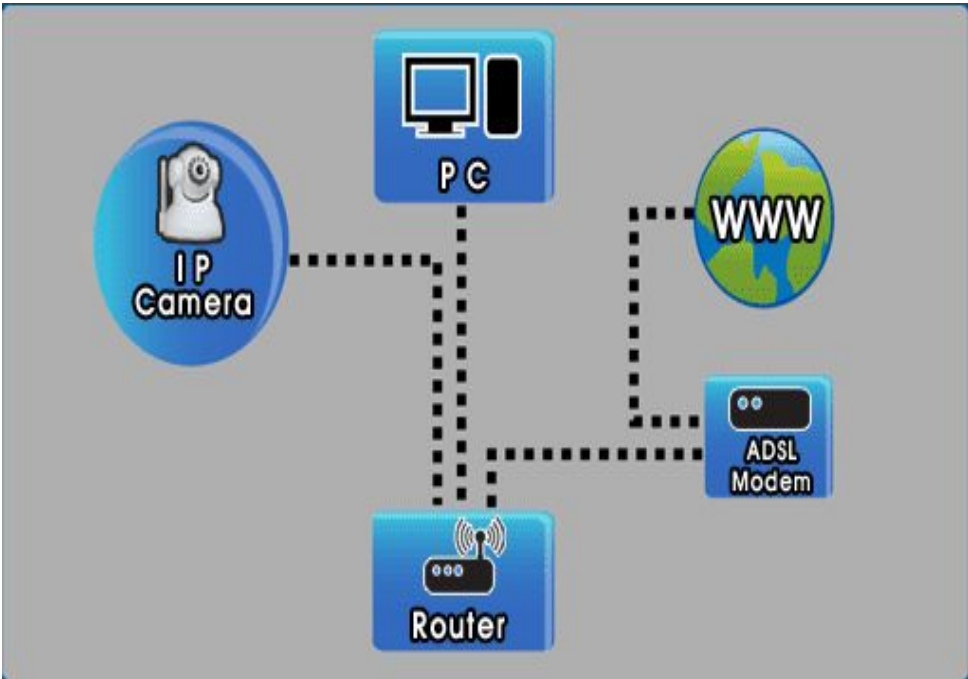
(For Windows OS)

A new generation of P2P IP camera adapts a groundbreaking P2P technology of new generation. The easy-setup, high quality camera delivers crystal clear surveillance video to your smartphone or PC. You can remotely control it from anywhere, anytime, and receive alerts to your smartphone or email address when motion is detected. You can also upload recorded video to your FTP server.

Note: The picture is for reference only.

1. Hardware Installation

Insert an end of cable into the camera, insert another end of cable to router. Of course, your router is connected with internet




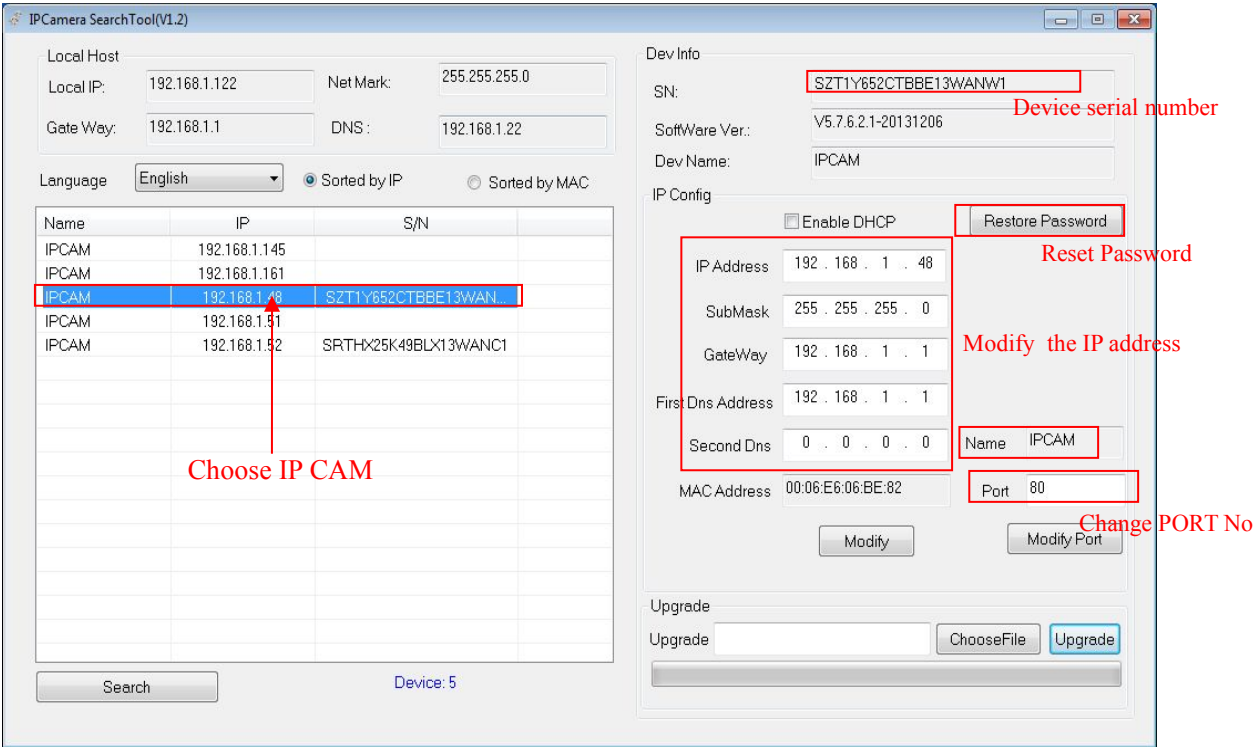
2.Software Installation

2.1 Insert the installation CD into the CD/DVD drive on your computer. The installation should start automatically.

Note: If the installation does not start automatically, choose Run from the Windows Start menu. Enter “d:autorun” (assuming installation CD is in D drive) in the run dialog box. You can also double-click on “Setup.exe” file on the installation CD to start the installation.



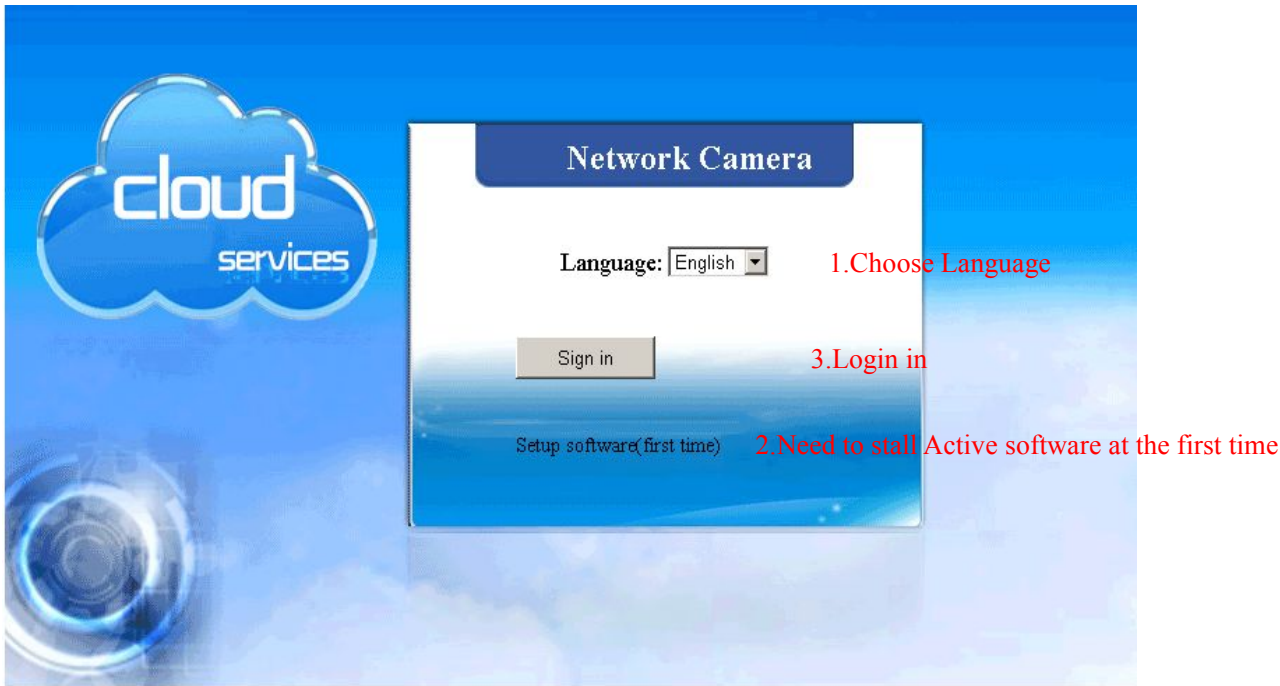
Run the Search Tool  ,The following screen will appear. Click [Next >] to continue



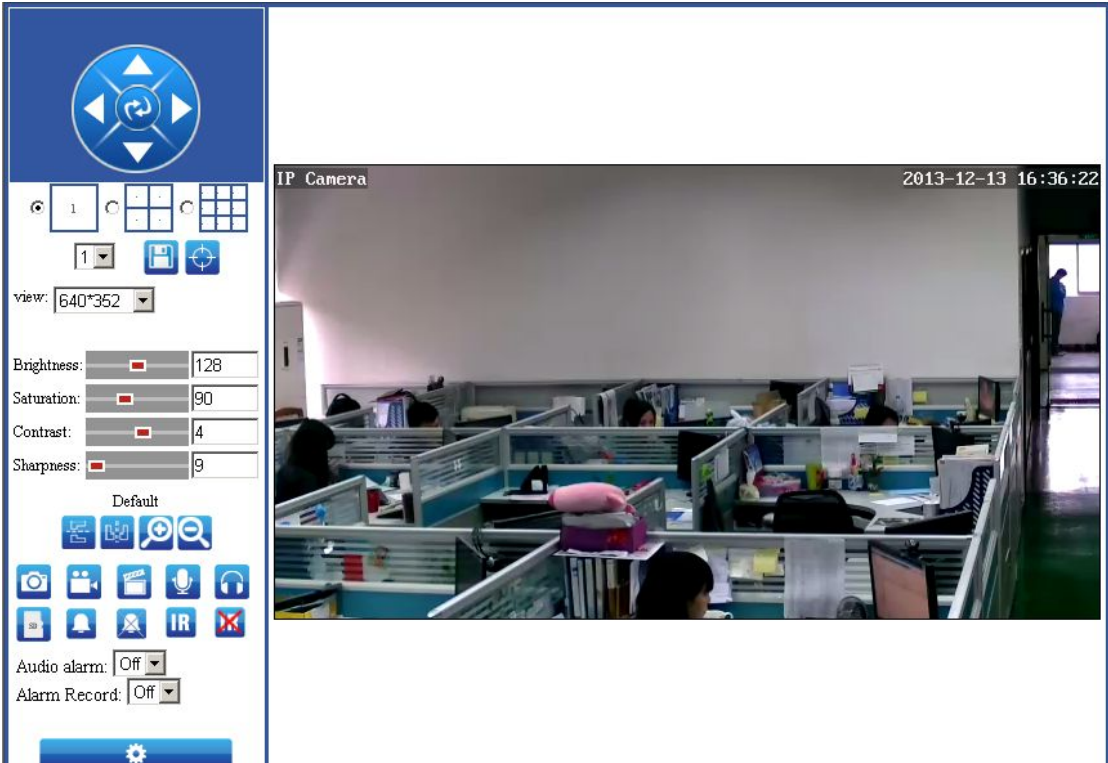
and enter the IP address directly open the login authentication page (for example, enter: http://192.168.1.48)to open the login screen as shown below shown,



- After entering the correct user name and password and click "OK" to open the monitor screen click on the appropriate browser model.



Choose the Language and stall Active at the first time,then Login in





Four camera in one screen



Nine camera in one screen

view: 1280*720

Resolution

Brightness: 141

Saturation: 90

Contrast: 4

Sharpness: 9



Flip Vertical



Playback



Alarm ON



Flip Horizontal



Mic



Alarm Off



Snapshot



Speaker



IR LED ON



Recording




SD Card



IR LED OFF

3.Camera setting:

3.1 Device Infomation

Click  to set the camera. User can see the Menu, Audio setting, Network Setting, Alarm Setting, Advance Setting, system setting.

3.2 Audio setting.

Click audio setting to see the details.

| Monitor | |
|------------------------|--|
| Media | |
| Video | |
| Audio | |
| Network | |
| Network | |
| Wireless | |
| Ddns | |
| P2P Settings | |
| ONVIF | |
| Alarm | |
| Alarm | |
| Email | |
| FTP | |
| Alarm Linkage Settings | |
| schedule | |
| Advanced | |
| User | |
| Timer record | |
| Terminal | |
| Multiple settings | |
| System | |
| Time | |
| Maintain | |
| Device information | |
| System Log | |

Audio Settings
1280*720
Audio Settings: ☒ On ☐ Off 1280x720 on and off
Audio Type: G726
640*352
Audio Settings: ☒ On ☐ Off 640x352 on and off
Audio Type: G726
320*176
Audio Settings: ☒ On ☐ Off 320x176 on and off
Audio Type: G726
Audio Input
Input volume: 72 (1-100) Click "Apply"
Output volume: 62 (1-100)

Apply Cancel

Please note that the audio format is G726

4.Network setting:

User can set the a fixed IP ADDRESS or automatic get ip address for the camera, and set DNS by manual or from DHCP server. And user can set the port no (default port no is 80)

Monitor

Media

Video

Audio

Network

Network

Wireless

Ddns

P2P Settings

ONVIF

Alarm

Alarm

Email

FTP

Alarm Linkage Settings

schedule

Advanced

User

Timer record

Terminal

Multiple settings

System

Time

Maintain

Device information

System Log

LAN Settings

IP Configuration Type: Fixed IP Address Get IP ADDRESS by manual or automatic

IP address:

Subnet mask:

Gateway:

DNS Configuration Type: Manual DNS

Primary DNS:

Secondary DNS:

HTTP&RTSP

HTTP Port number: (80 or 1024~49151)

RTSP Port: (554 or 1024~49151)

RTP Port: (5000~8000)

RTSP Permission check: ☒ On ☐ Off (Note: Modify the settings, reboot the device)

Apply

Cancel

Monitor

Media

Video

Audio

Network

Network

Wireless

Ddns

P2P Settings

ONVIF

Alarm

Alarm

Email

FTP

Alarm Linkage Settings

schedule

Advanced

User

Timer record

Terminal

Multiple settings

System

Time

Maintain

Device information

System Log

Monitor

Wireless

Enable Wireless: ☒ On ☐ Off

SSID:

Mode:

(Select Infrastructure mode if using wireless router.)

Security mode:

Check Wireless Setup:

1.WIFI ON

2.Search WIFI

Monitor

Media

Video

Audio

Network

Network

Wireless

Ddns

P2P Settings

ONVIF

Alarm

Alarm

Email

FTP

Alarm Linkage Settings

schedule

Advanced

User

Timer record

Terminal

Multiple settings

System

Time

Maintain

Device information

System Log

Monitor

Wireless

Enable Wireless: ☒ On ☐ Off

SSID:

Mode:

(Select Infrastructure mode if using wireless router.)

Security mode:

WPA Algorithm:

Key:

Re-type key:

Check Wireless Setup:

4.Input the wifi use name and password

5.Apply

NOTE:User need to use wire first,after setted up wifi as shown above,then plug out the network cable and use wifi for the connection.

4.2 DDNS setting:

Monitor

Media

Video

Audio

Network

Network

Wireless

Ddns

P2P Settings

ONVIF

Alarm

Alarm

Email

FTP

Alarm Linkage Settings

schedule

Advanced

User

Timer record

Terminal

Multiple settings

System

Time

Maintain

Device information

System Log

Monitor

Internet IP Address

Main DDNS

☒ On ☐ Off

Open 9299.org DDNS

Server:

Port:

User name:

Password:

3th DDNS

☒ On ☐ Off

Open Third-Party DDNS

Provider:

User name:

Password:

Your Domain:

UPnP Port Forwarding

☒ On ☐ Off

UPNP ON

Monitor

Media

Video

Audio

Network

Network

Wireless

Ddns

P2P Settings

ONVIF

Alarm

Alarm

Email

FTP

Alarm Linkage Settings

schedule

Advanced

User

Timer record

Terminal

Multiple settings

System

Time

Maintain

Device information

System Log

Monitor

Internet IP Address

Main DDNS

☐ On ☐ Off

Server:

Port:

User name:

Password:

3th DDNS

☒ On ☐ Off

Provider:

User name:

Password:

Your Domain:

UPnP Port Forwarding

☐ On ☐ Off

http://192.168.1.48/web/interip.html - Microsoft... x

Internet IP Address: :116.24.250.141

Find the IP address of the camera in Internet

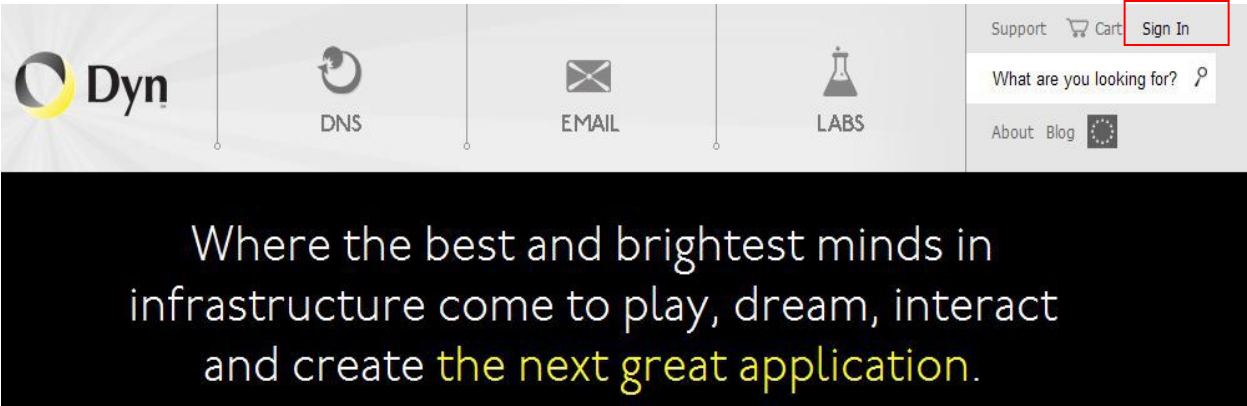
Choose the server,and type the corresponding user name and password

NOTE:User can get ddns user name and password after registered at the third-part DDNS supplier,such as www.dyndns.org or www.3322.com.

- REGISTER AND APPLY FOR DDNS SERVICE

1>Users use DDNS management system first time.Users need to apply account to manage and inquire the domain state.

Step1: enter <http://www.dyndns.com/> and **Create Account.**(Fill in Domain Name **.dyndns.org** then Click **Add**)



Step2: enter your information

Create an account or log in to continue

Welcome! You can login to the right to manage your services or create an account below.
If you haven't already, check out the new site on dyn.com! Did you mean to log in to [DynECT Email Delivery](#) or [DynECT Managed DNS](#)?

Username

well1888

Password

•••••

Confirm password

•••••

Email

well18888@yahoo.cn

Confirm Email

well18888@yahoo.cn

Security Image

3 1 1 0 3

Enter the numbers from the above image:
31103

Already Registered?

Username

Password

Log in

[Forgot your password?](#)

☒ Subscribe to Dyn newsletter (One or two per month)

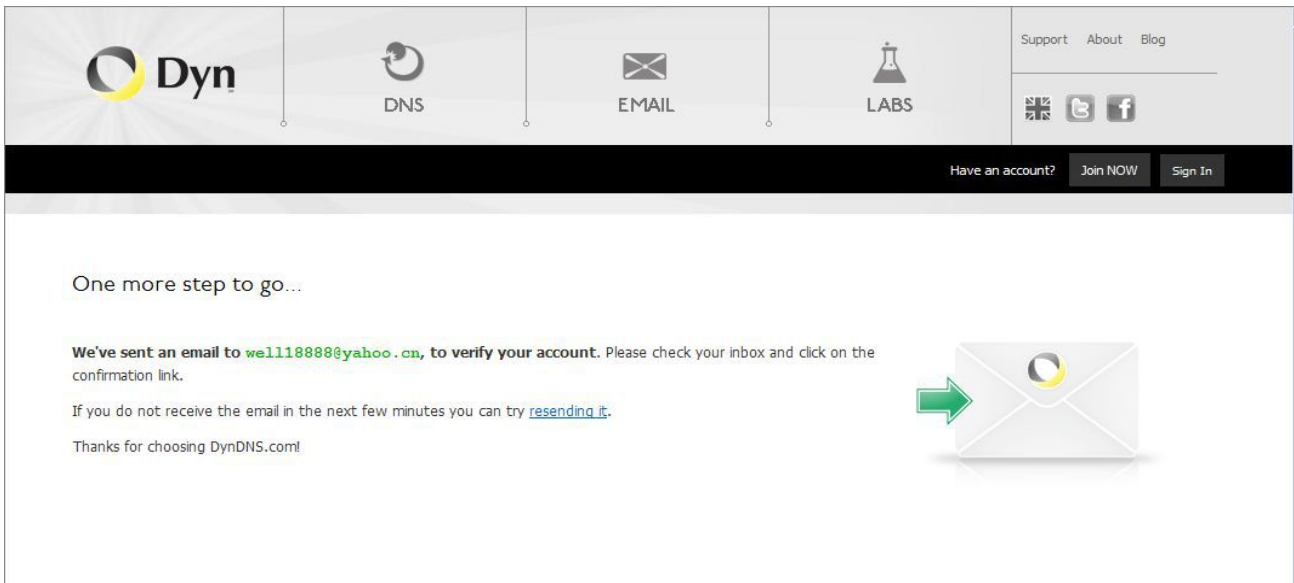
☒ I accept the terms of Dyn's [Acceptable Use Policy](#), the [Dyn Services Agreement](#), and Dyn's [Privacy Policy](#).

Create Account

If you're having difficulty creating your account, for any reason, feel free to [contact us](#).

5.Alarm setting:

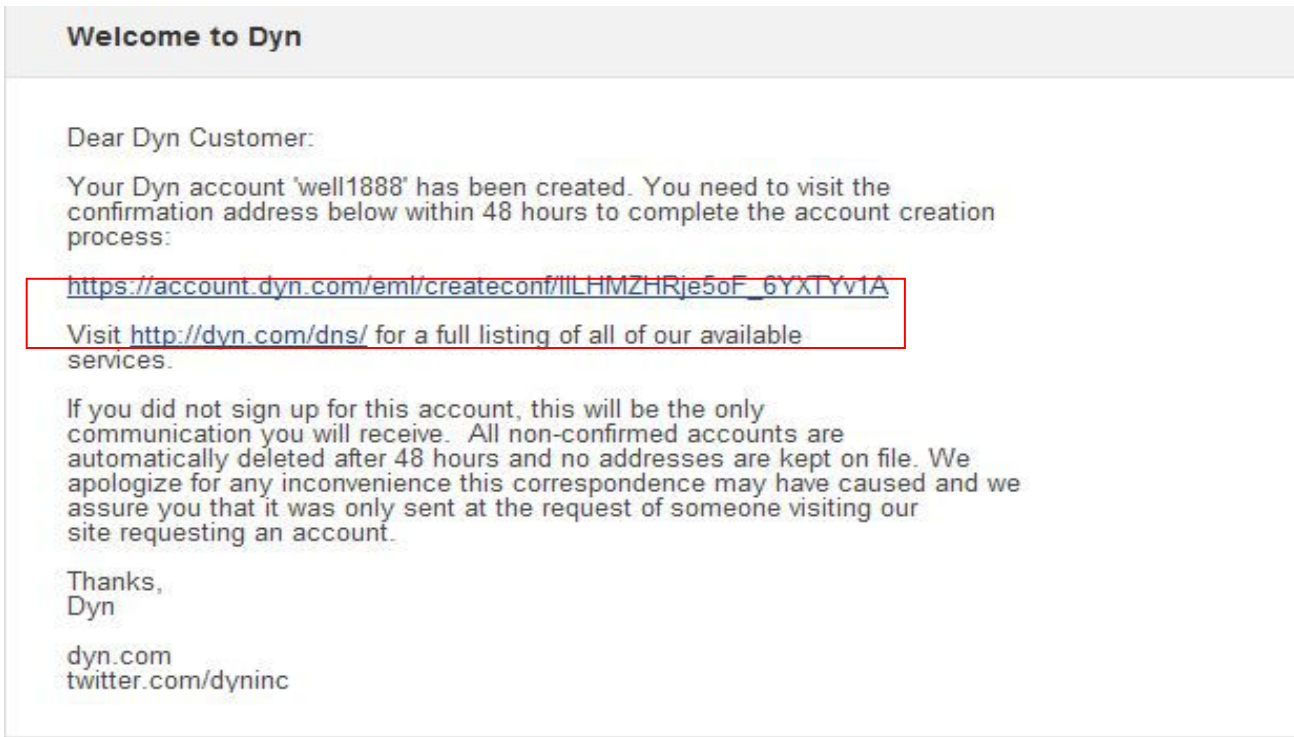
Page 8



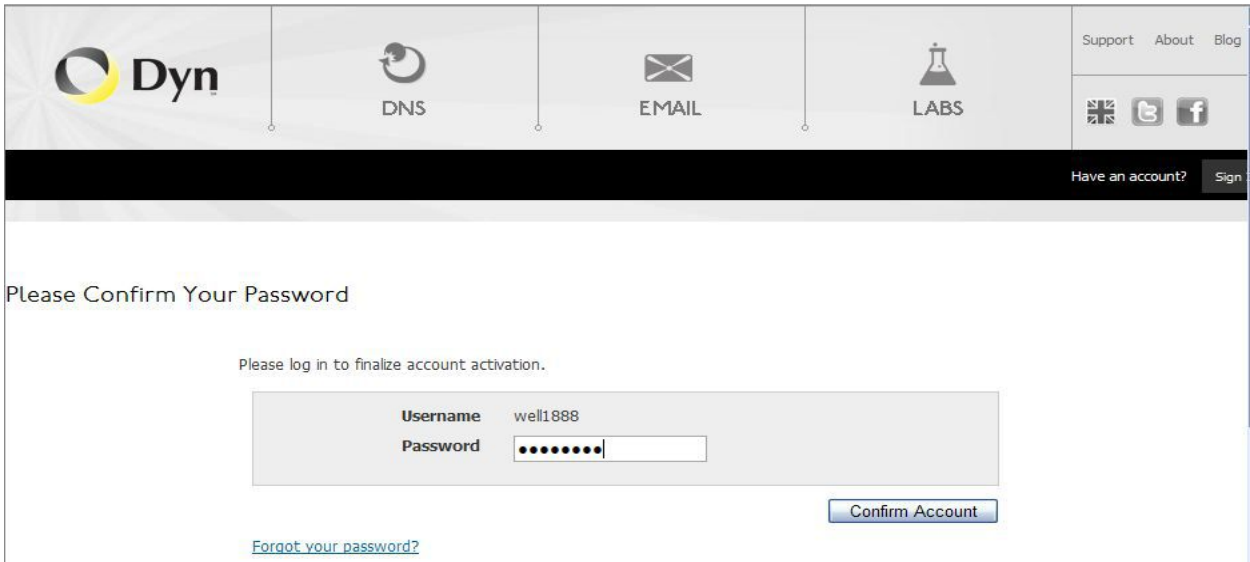
Step3: After a minute, you will receive an E-mail from **DynDNS Support** and it will give you a confirmation address

(e.g.

https://account.dyn.com/eml/createconf/l1LHMZHRje5oF_6YXTYv1A



Step4: Open the link to active your Domain Name as below.Login in your account after it is activated



Step5: Check all the DDNS services,we choose the 14-day-trial

Account **well1888** has been confirmed and activated. Please explore the following options to get started.

most popular!

| Features | DynDNS Pro \$20.00/yr | Dyn Standard DNS \$29.95/yr | DynECT Managed DNS Lite \$30.00/mo STARTING PRICE |
|-----------------------------------|--------------------------|--------------------------------|--|
| | CONTINUE | CONTINUE | CONTINUE |
| Hostnames/DNS Records | 25 | 75 | 100+ |
| Domain name | Choose from one of ours | Custom Domain | DNS hosting from 10+ domains |
| Access to phone technical support | ✓ | ✓ | ✓ |
| Number of Users | 1 | 1 | 100+ |
| Data Centers | 5 Unicast | 5 Unicast | 17 Anycast |
| Logs | Update history (24 hr.) | Update history (24 hr.) | Comprehensive change logs |
| SOAP/REST API | - | - | ✓ |
| | CONTINUE | CONTINUE | CONTINUE |

Just starting out with Dynamic DNS? We offer a [14-day trial](#) of DynDNS Pro!

Step6: Click the link,and user will see as below.

Support

Cart

Sign

What are you looking for?

About Blog

DynDNS Pro Free Trial

Try out our basic Dynamic DNS & Remote Access service for 14 days.

START THE TRIAL

- enter your information

Welcome **well1888** **FREE**

[My Services](#)

[My Cart](#)

[Log Out](#)

My Account

My Services

DynDNS Pro/Hosts

DynECT Managed DNS Lite

Domain names, DNS hosting, Dyn Email services

Internet Guide

Dyn Standard SMTP

DynECT Email Delivery Lite

Renew Services

Auto Renew Settings

Sync Expirations

Tips on Getting Started

Account Settings

Billing

My Cart

1 item

Add New Hostname

[Host Services](#)

You currently have an unpurchased [DynDNS Pro Trial service](#) in your shopping cart. You can now create hostnames on our [subscriber-only premium domains](#), enable wildcard subdomains, and access a variety of other benefits.

Please note: if you cancel the DynDNS Pro Trial service, these features will be disabled.

Hostname:

well1888

·

dyndns.org

Wildcard:

☐ create "*.host.dyndns-yourdomain.com" alias (for example to use same settings for www.host.dyndns-yourdomain.com)

Service Type:

☒ Host with IP address

☐ WebHop Redirect (URL forwarding service)

☐ Offline Hostname

IP Address:

116.24.233.9

IPv4 or IPv6 address should be specified!

Your current location's IP address is 116.24.233.9

IPv6 Address (optional):

TTL value is 60 seconds. [Edit TTL...](#)

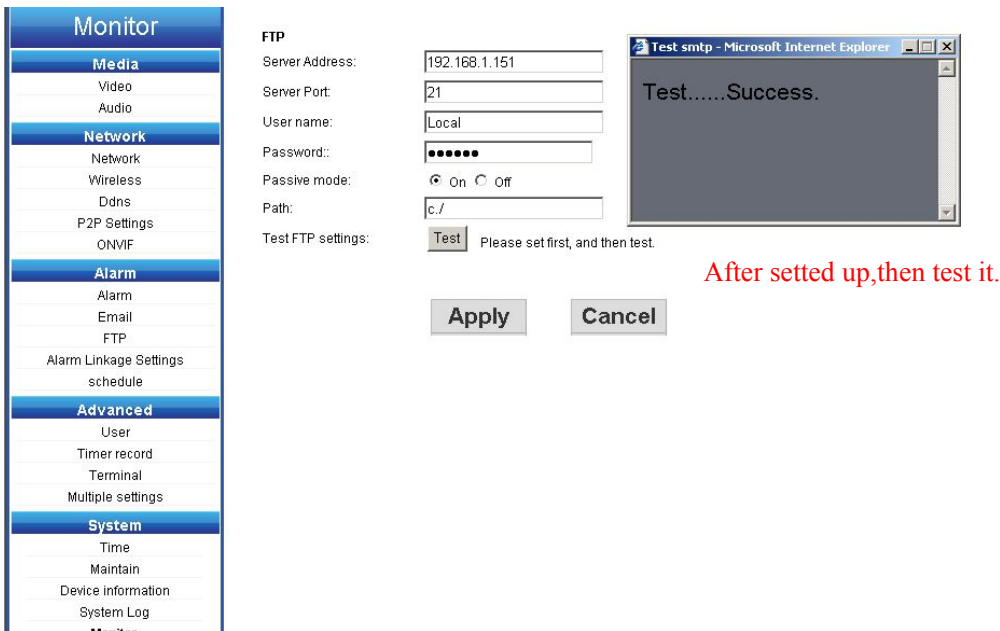
Mail Routing:

☐ I have mail server with another name and would like to add MX hostname...

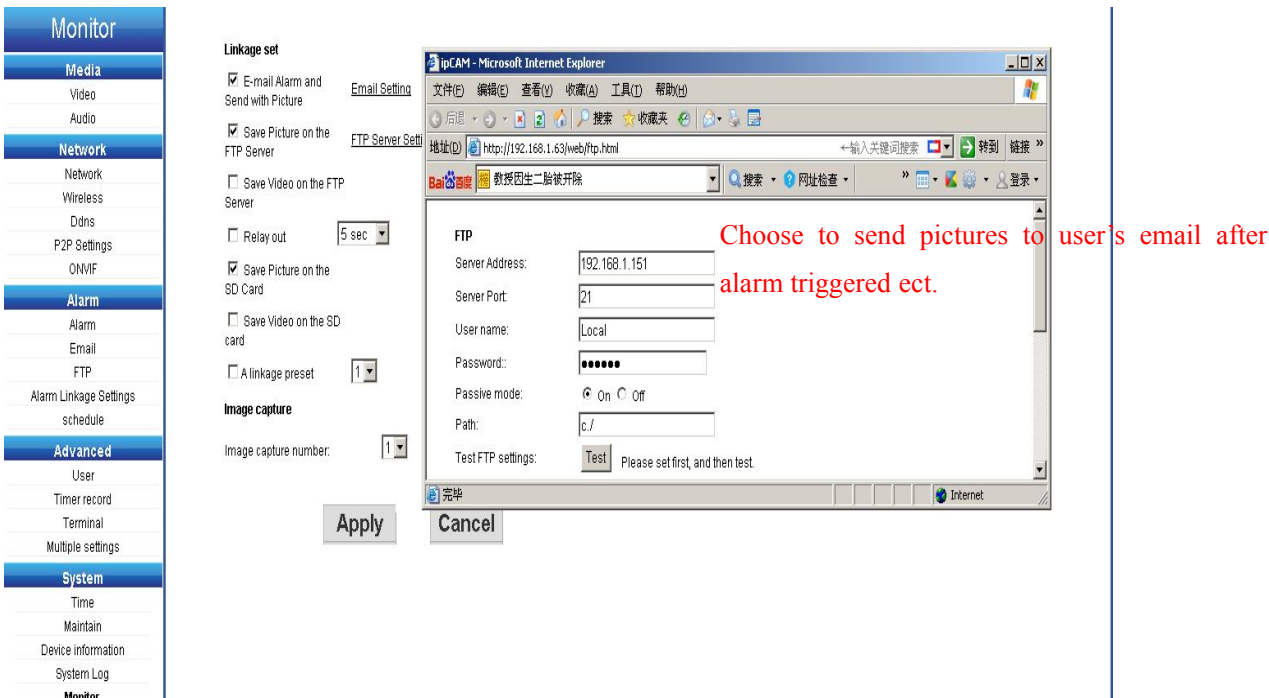
[Add To Cart](#)

Step7: Now you obtained a Dynamic Domain Name(Figure 105),and can use it in the DDNS Service Settings

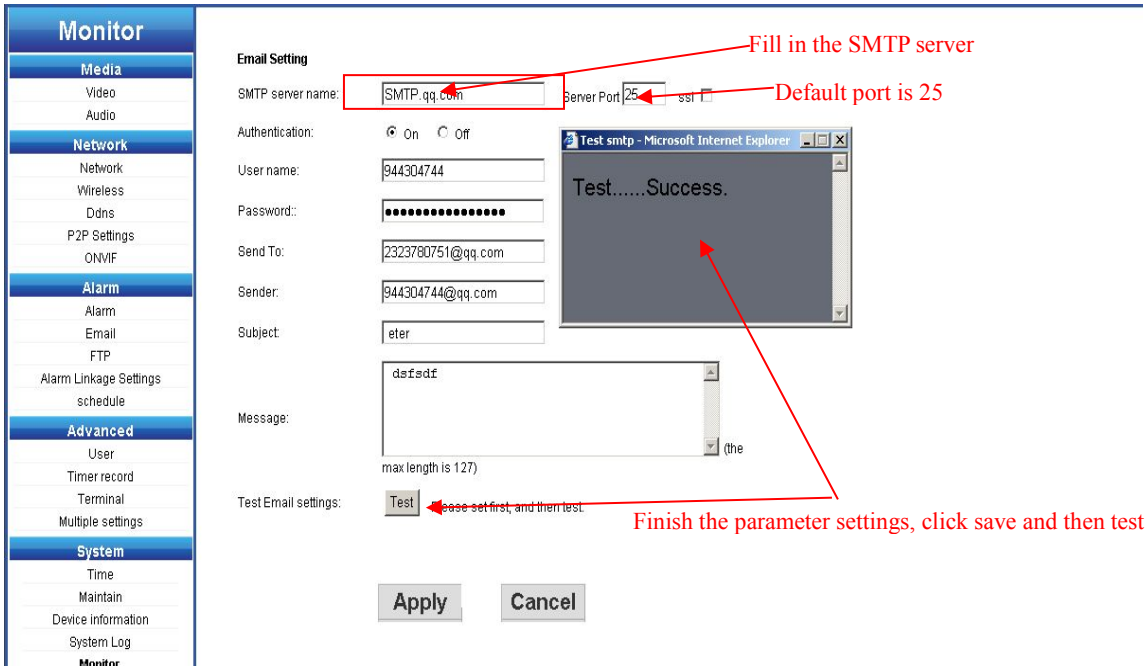
Page 10



Note:The default Port No is 21.And set the path for picture saving.



5.3 Email Setting

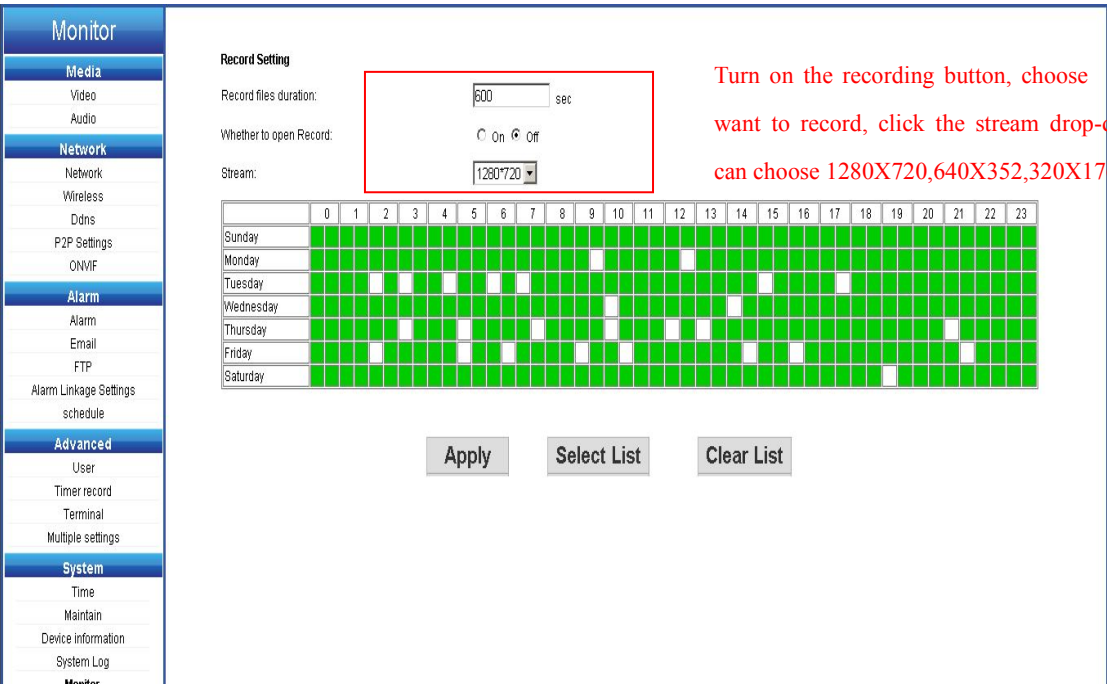


- Start the test, input User name and Password, the user name is the sending mail address and password is the email box's.
- After the setting is done, then click test button.
- SMTP server: different email provider has different server, if user use gmail email,then the SMTP server is smtp.gmail.com.

6. Advanced settings

6.1 Regularly recording

Open the regularly recording interface for recording settings.



- User can choose when to record in the table and change how long to record. The stream also can be selected by the user themselves.

● Requirement

Hardware requirement:

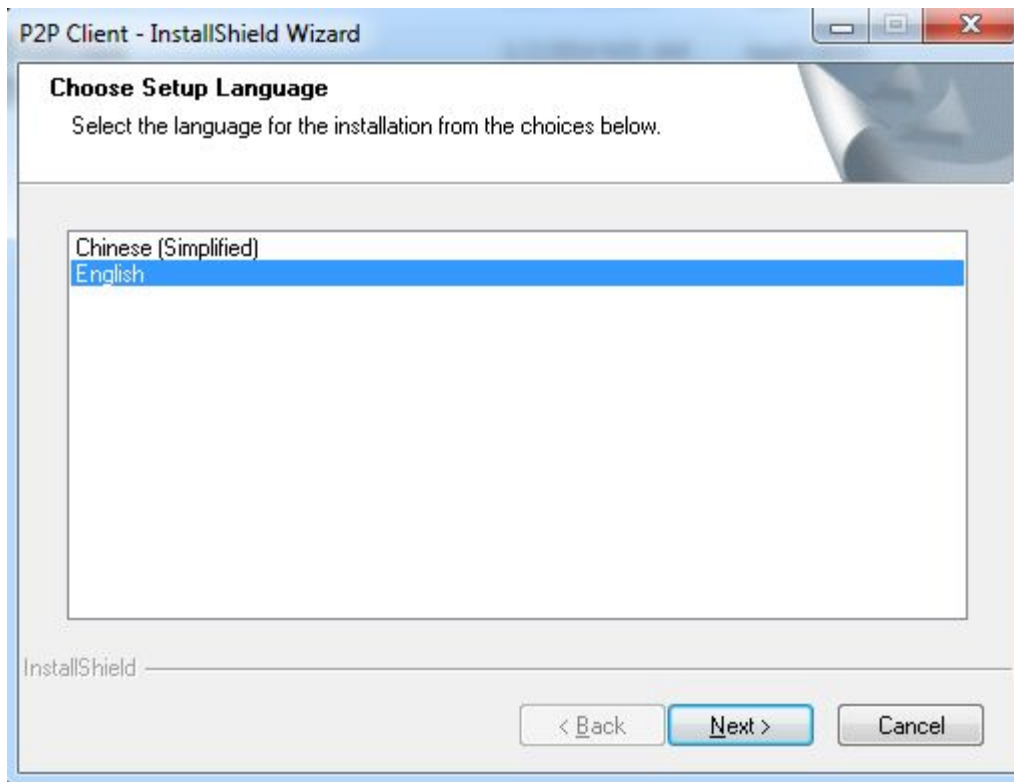
CPU: 2.06GHZ or above Memory Size: 512MB or above (suggested 1.0GHz)

Network card: 10M or above Display card: Microsoft DirectX9 or above

Broswer: WindowsXP, Vista, Windows7, Windows8

● Installation:

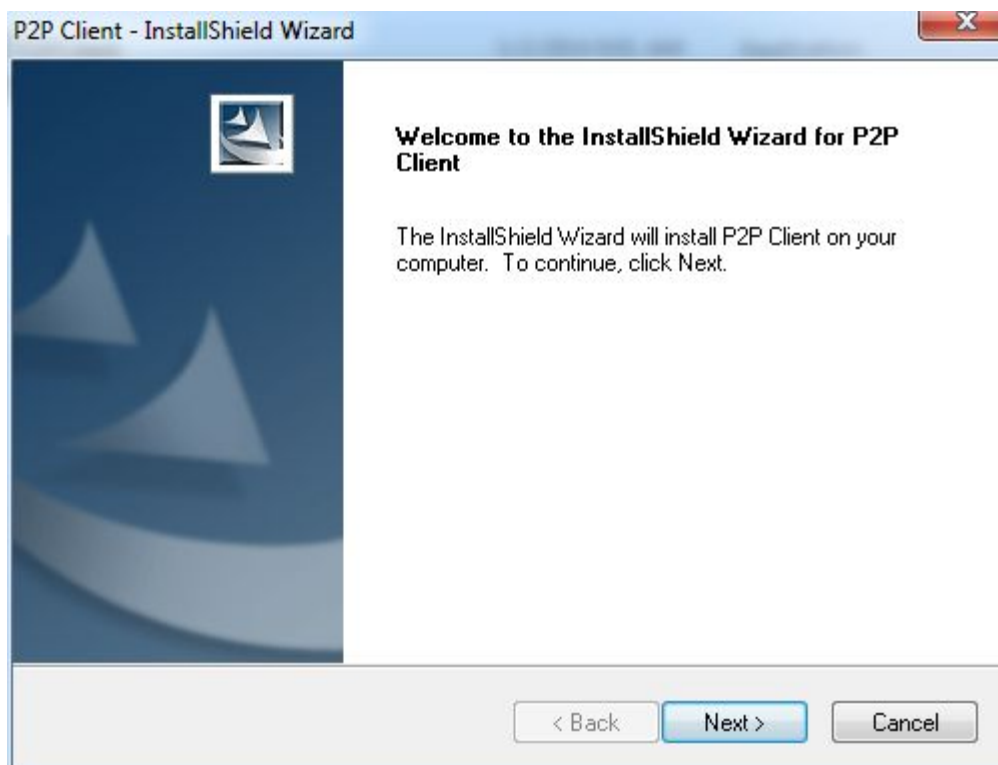
Run the software



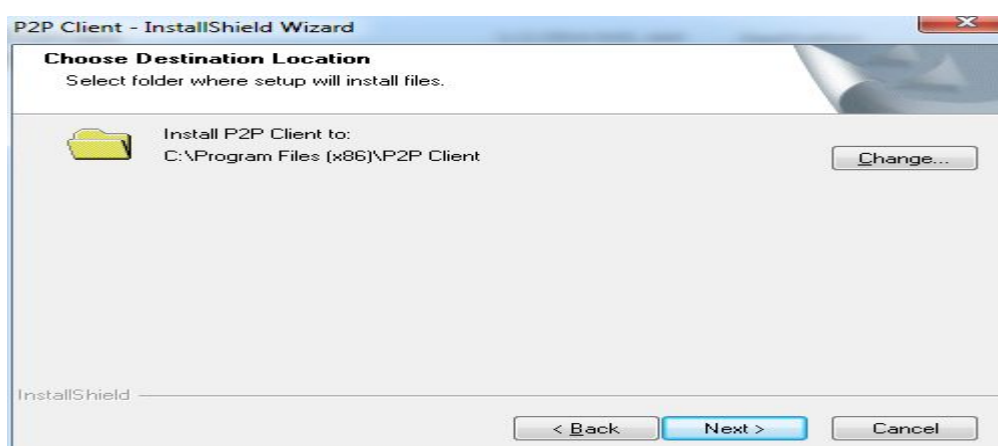
Super-Client Introduction

- Requirement

Click “Next”



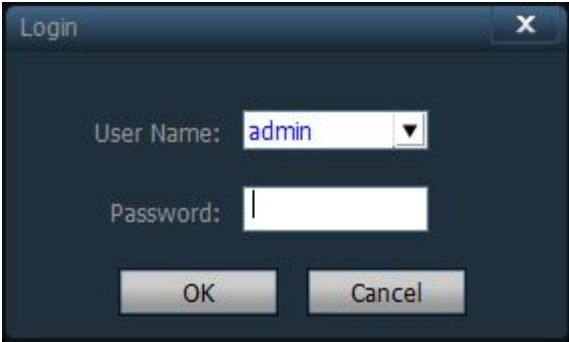
Click “Next”



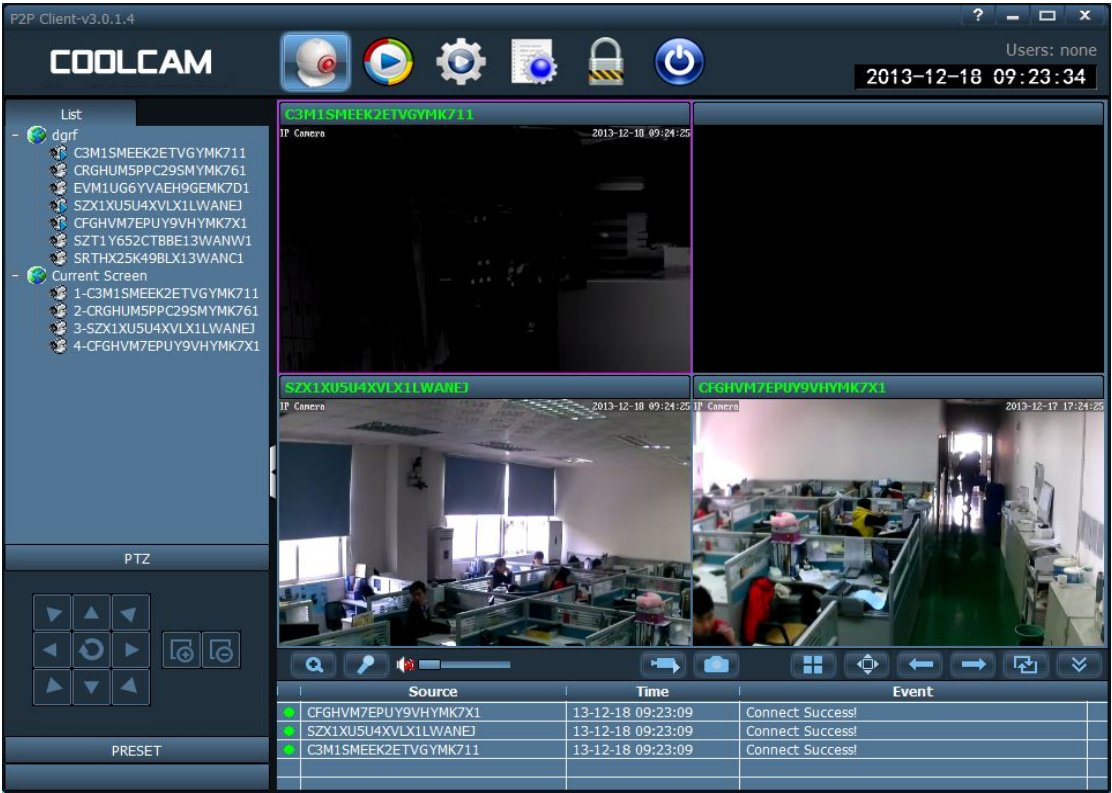
User can change the installation path,click”next”to finish the installation,and see the icon on the



- Sign in in and out



The default user is admin,password:blank,sign in the super client after click “confirm”
Only the authority level”admin”can sign out the super client, authority level”user”and “guest”can’t sign out the super client



The interface shown as above have six parts.

- 1.System Setting
2. Menu
- 3.Camera List
4. 4.Live View
5. PTZ control
6. Alarm List

System Menu



Live video



Recording



System Setting



Operation Log



Log off or change user



Sign out

Device: Show camera list according to the Monitoring Area, setting and channel

Current model: display the current device on the screen, only show below the camera list

- Preset Setting

| PRESET | |
|-----------------------|------------|
| NO. | PresetName |
| 001 | Preset001 |
| 002 | Preset002 |
| 003 | Preset003 |
| 004 | Preset004 |
| 005 | Preset005 |
| 006 | Preset006 |
| 007 | Preset007 |
| <div>GotoSetDel</div> | |

Super-client support Max 256 preset

【Preset Setting】choose the window which need to set preset, then choose the preset no, and click “set”. before chosen, need to set preset first.

【Preset Deleted】Choose the window which need to delete, then click the delete button to delete the preset

Close recording: Choose before close recording and save the changes. Or cancel the green block on the scheduled recording list. User need to click the green block and drag it, then user can cancel it.

Note: If all cameras have the same recording scheduled time, then user just set one device and click one device and copy and save, the all cameras will on scheduled recording list

- Pan-tilt control

By the direction key can control yuntai eight directions, by dragging the scroll bar can choose the speed of yuntai, “-” said mixing machine speed slow, “+” said yuntai acceleration




Focal length larger buttons, need a camera support



Focal length smaller button, need a camera support

- Add Device

1. Add a device in LAN:

Click “System Setting” button  and user need to finish some steps to add cameras in LAN. Please check the steps as shown below.

Add Device

UID: CSHUEDFJGFJIDFGUU8DHF

Name: SDF

Password: ****

Area: dgrf

Input the device ID

User-defined name

Input the password

Choose the area

OK

Cancel

UID: Use can find the ID on the sticker of the camera.
Name: Name it at random, no more than 15 letters.

● Image Preview

P2P Client-v3.0.1.4

COOLCAM

2013-12-18 09:23:34

List

dgrf

C3M1SMEEK2ETVGYMK711

CRGHUM5PPC29SMYMK761

EVM1UG6YVAEH9GEMK7D1

SZX1XU5U4XVLX1LWANEJ

CFGHVM7EPUY9VHYMK7X1

SZT1Y652CTB8E13WANW1

SRTHX25K49BLX13WANC1

Current Screen

1-C3M1SMEEK2ETVGYMK711

2-CRGHUM5PPC29SMYMK761

3-SZX1XU5U4XVLX1LWANEJ

4-CFGHVM7EPUY9VHYMK7X1

PTZ

PRESET

C3M1SMEEK2ETVGYMK711

IP Camera

2013-12-18 09:24:25

SZX1XU5U4XVLX1LWANEJ

IP Camera

2013-12-18 09:24:25

CFGHVM7EPUY9VHYMK7X1

IP Camera

2013-12-17 17:24:25

Source

Time

Event

CFGHVM7EPUY9VHYMK7X1

13-12-18 09:23:09

Connect Success!

SZX1XU5U4XVLX1LWANEJ


13-12-18 09:23:09

Connect Success!

C3M1SMEEK2ETVGYMK711

13-12-18 09:23:09

Connect Success!

Talkback function, When using this function, It will show a letter”T”behind

ftawer


C3M1SMEEK2ETVGYMK711



EVM1UG6YVAEH9GEMK7D1(T)


DVMHS8EYPKZ1ANYMK74J

WMW9SH7ZC66HS4CWU4Y1


of the camera name

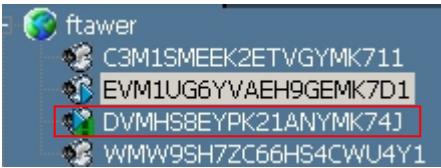
Electronic Enlarge Function.User can enlarge the choosen area after click the button to see more details of the choosen area.

Audio.It will showwhen the audio on.User can monitor mulit-camera at the same time.


Recording,when click on the video recording,In the camera list with

Page 18

corresponding UID  logo, click again to close recording.




 Snapshot

 Full Screen

 Front Page




 Next Page

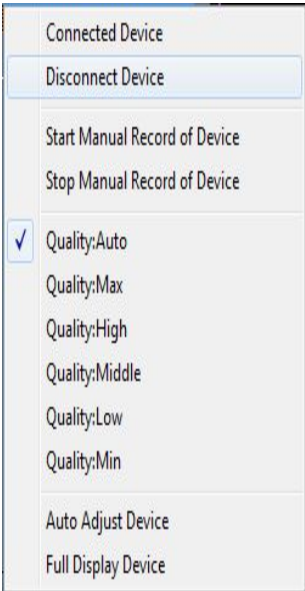
 Robin cut button, click the open group follow cut, cut click suspend groups follow again

 Alarm List show or close

Acyclic preview



Double the name of camera,then it will show video on the righthand.If  ,it means connected .If shown  , it means disconnected.If show  , it means that there is a alarm for the



Connected Device: Connect
Disconnect Device:Disconnect
Start Manual recording of device:Start VideoRecording
Stop Manual Recroding of device:Stop Video Recording
Quality:Automatic Adjust
Highest Quality: Resolution1280*720 Bit rate: 512kbps Frame Rate: 5fps
High Quality: Resolution:640*480 Bit rate: 384kbps Frame Rate: 10fps
Middle Quality : Resolution 320*240 Bit rate: 256kbps Frame Rate : 10fps
Low quality : Resolution 320*240 Bit rate: 128kbps Frame Rate: 10fps
Lowest quality: Resolution 320*240 Bit rate: 128kbps Frame Rate: 5fps
Automatic adjust pictures: Choose the choosen device,audomatic adjust the

● Preview

When switching to the group list, only use circulation mode display images, must first while trying to open follow cut set grouping, specific Settings view

"equipment group。 click  button to opencirculation

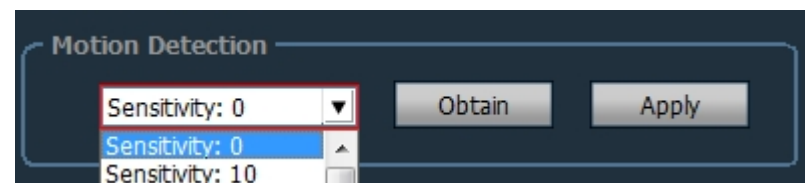
， click again  to stop circulation。

1)motion detection

Set the motion detecting sensitivity

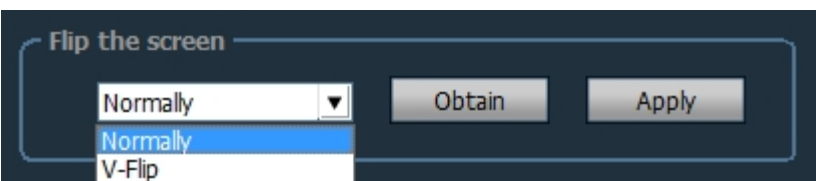
First step: Choose the need to modify the equipment in the tree list

Second step : Select the sensitivity of the equipment from (0-100), click Settings

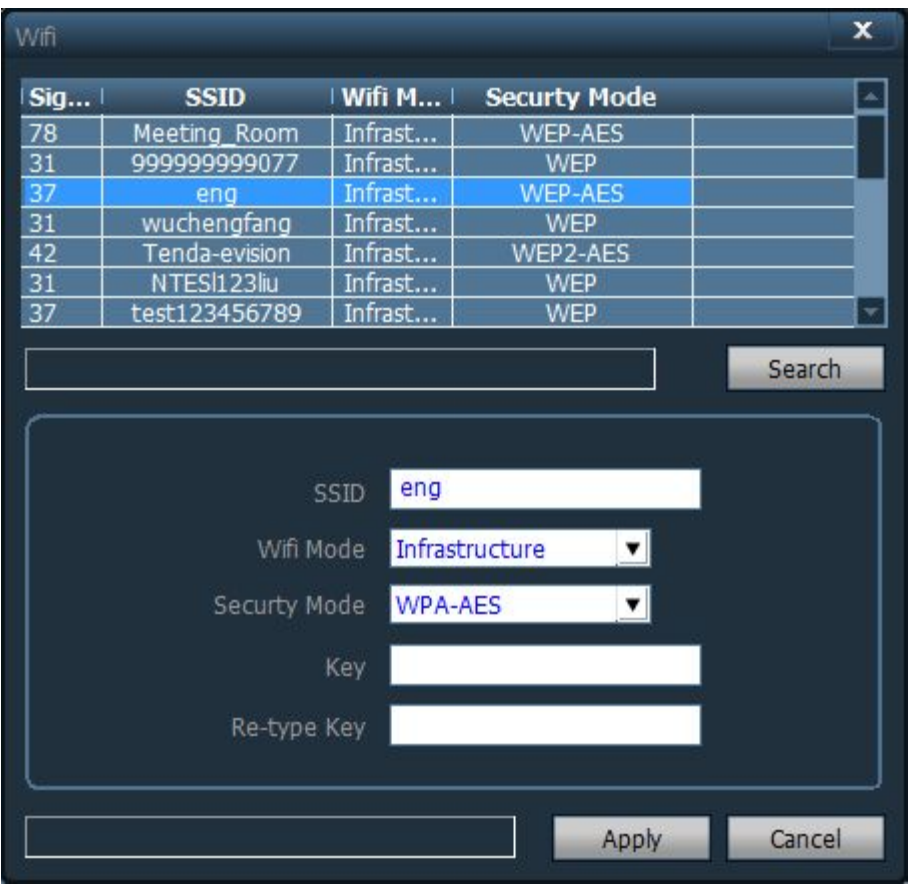


1) Picture flip

Can be set up, the vertical flip, flip horizontal, vertical flip horizontal four kinds.



2) WIFI setting



Setting step:

First step: Select enable WIFI, click search the WIFI signal

Second step:The double-click the SSID signal of WIFI

Third step:Enter The WIFI password key

Fourth step:Click the Settings button, and then click the check WIFI, restart the equipment

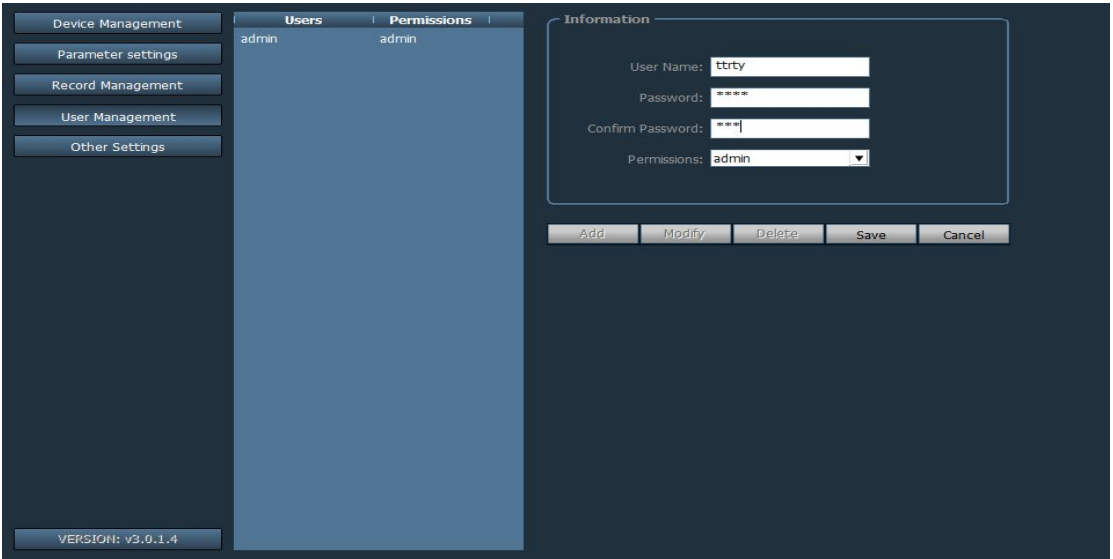
Fiveth step:For equipment to restart disconnecting, let its use wireless automatic connection

● User Management

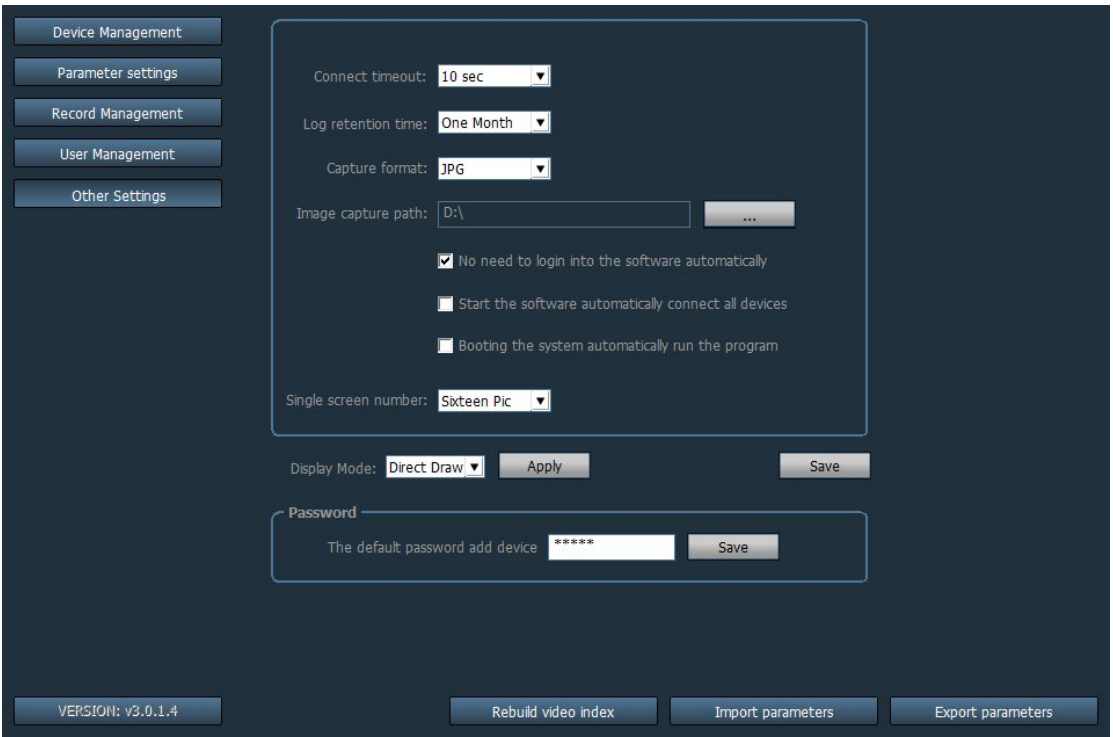
The default administrators :admin,password:blank.delete user and set the authority level.Authority level:admin,user,guest.

Admin authority:administrator authority level,can manage device,user management,video

monitoring,record and playback,log checking and sign out super-client
User authority:video monitoring,record and playback,change user and sign out super-client
Guest authority:video monitoring,change user and change password



● Other management

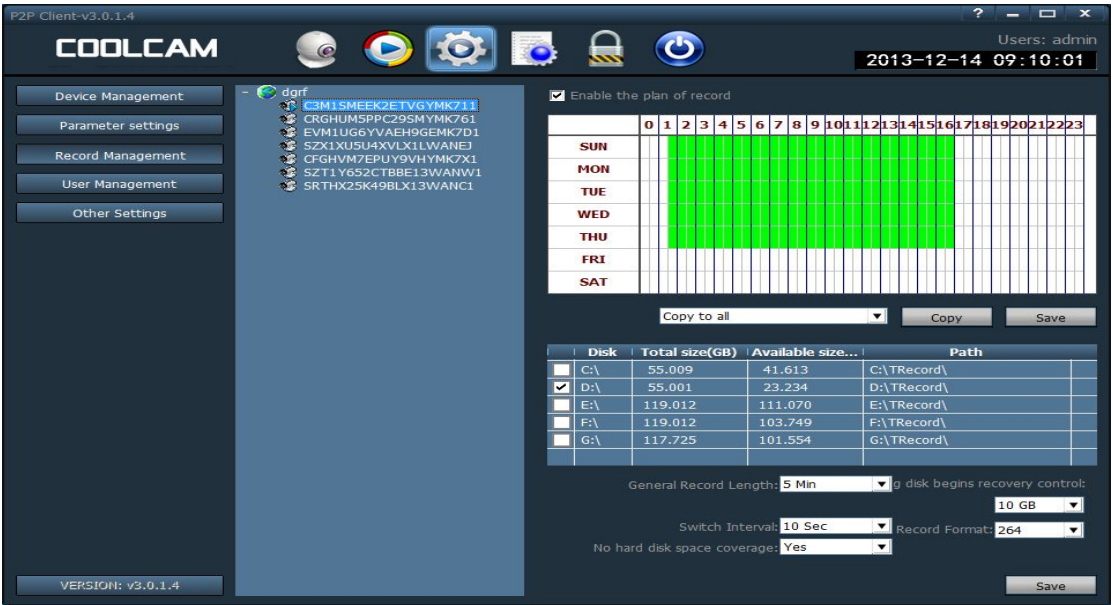


Overtime connection:
Log saving time:there are one month,two month,three month,and six month,four options,won't delete during the setting time.
Snapshot format:JPG and BMP
Path for snapshot:the saving path for snapshot pictures.
Multi-device in one screen:16 cameras,25 cameras,36 cameras.(works after restart software)
Display model:Direct Draw mean plat display,Direct 3D mean 3D display
Save:after click save to save some changes
eading-out setting:backup all setting
leading-in setting:leading-in all the setting in another super-client,and recover all the setting(the two super client have to be the same,otherwise,it will have some problems)
Rebuilt recording index:delete all recording date index files,and rebulit a new recording data index files

● video management

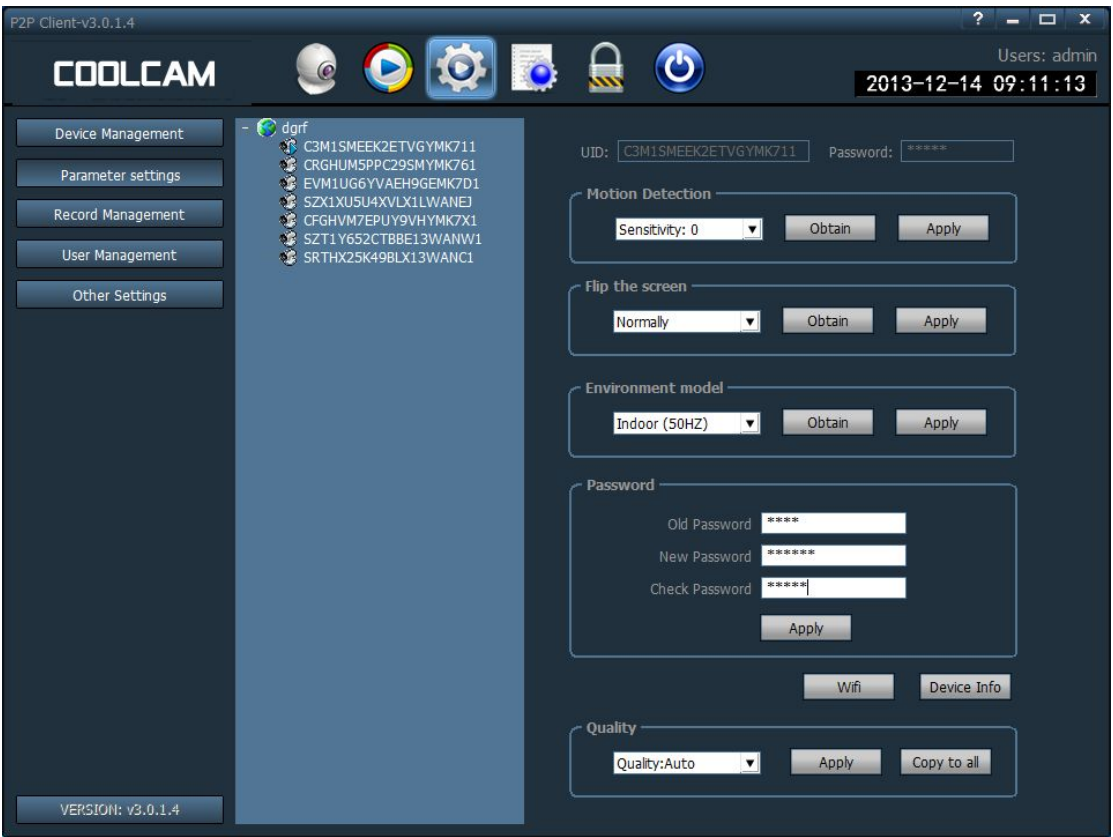
Open plan video:Choose channel and then in the planner,Click the left mouse

button drag a green block as shown.Green is the range of video time, after period of time have been set, click save.



Close the video: cancel before box, click save, or cancel the green blocks in the schedule and click save. Cancel the green block method: just click the left mouse button in the green block drag mouse can cancel the green blocks.

Attention: If all the equipment of video plan at the same time, need to set up a device, click copy and save after all equipment opens the video program。achieved;



Connection timeout: connection timeout 5 set to 60 seconds
Log to save time: one month, two months, three months, six months four options, the client logs in the set period of time not to delete
Capture format: refers to the client captured image format, capture format: JPG, BMP two kinds

Image capture path: refers to the client captured images saved path
Single picture number: can set the maximum number of single: 16, 25, 36, (need to restart the software to work)


Display mode: Direct said the Draw 3 d graphic rendering Direct 3 d rendering
Save: modify the parameters need to click "save" button to set to take effect
Export parameters: pour out the client all set parameters (backup all configuration parameters)

Import parameters: set the parameters of the export and import to another client, restore all configuration parameters (two client version is consistent, inconsistent if possible exception.)


Reconstruction of video index: delete the video database index file, re-established video database index file.

● Playback


Time index playback


Recording button.user can go on recording after playback video is over.

Stop playback recording button,stop the recording play after click it.


Play button for single frame rate,after click the button,then show one frame rate picture.

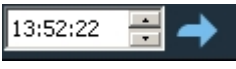
Snapshot button

enlarge button,enlarge monitoring area when recording after click the button

Full Screen button,shon full screen for all cameras in a single window.choose one window if want full screen

Choose play speed when recording,the default value is normal speed

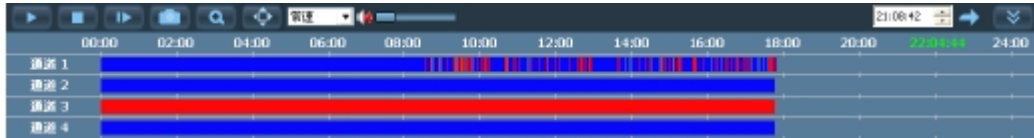
Voice Button,user can choose if open voice or not,default value is close

SKIP button,choose the setted time,and skip to play from the setted time

【video play index】

- First steps:choose the record way and time
- Second steps:choose play window,and choose playback channel at the camera list
- Third steps:choose the recording video files at the choosen time range.
- Four steps:double click to set the playback

| 2013/12 | | | | | | |
|---------|----|----|----|----|----|----|
| 日 | 一 | 二 | 三 | 四 | 五 | 六 |
| 01 | 02 | 03 | 04 | 05 | 06 | 07 |
| 08 | 09 | 10 | 11 | 12 | 13 | 14 |
| 15 | 16 | 17 | 18 | 19 | 20 | 21 |
| 22 | 23 | 24 | 25 | 26 | 27 | 28 |
| 29 | 30 | 31 | | | | |
| | | | | | | |



ote:Timeline will show current time in our location,and can have a accurate fix positon for recording,click timeline,it can show 2 hours.usually,the time is 24 hours.

- Playback for searching file
-

First steps:choose the file type and device channel

Second steps:choose searching time and click “search”button,system will show all the video file at the camera list

Third steps:choose playback window and double click recording file,then will playback the video,and support playback four cameras in four window at the same time

Log

Log type

- 【All log】 record all system information
- 【operation log】 record all operation information
- 【Alarm log】 record alarm information

Log saving time

First steps:choose “setting “on the menu---”other setting”

Second steps:choose the time:one month,two month,three month,six month,and click “save”button

Log checking

First steps:choose log type and subsidiary log type

Second steps:choose log device,default all devices.

Third steps:click to search from the start to the end.

Log recovery

First steps:choose the log type

Second steps:choose the log device,default:all device

Third steps:choose from the start to the end,and click”search”button

Four steps:click leading-out button and choose the saving path

Note:1.need to search log first,then user can recovery log

2.the format for log is excel

3.One excel just save 5000 records,the rest will be in another excel file
