
P2P IPCAM User Manual

(For Windows OS)

IP camera User Manual

Our products penetrate the P2P technology, such as computer plug and play with networking so it makes Telecom, China Netcom, 3G smooth exchange of visits, which achieve Internet Interworking ideal target.

Note: The picture is for reference only.

1. Hardware Installation

- 1.1 Open the package and take the ip cam and accessories out, First install the ipcam wireless antenna



- 1.2 Fix the ip camera, insert one end of the network cable to the camera tail Ethernet card interface, on the other end of the RJ45 network interface connected to a router or switch..



- 1.3 The software of IP Camera support windows XP/Vista/windows7 etc. operation system, Pls use the power adapter to connect the DC5V port on the back of the ip camera. Plug the other end to an electrical outlet. Check the card's power indicator light (yellow) and the network indicator (green) is working properly, the camera pan and tilt rotate automatically..



2 .Software Installation

- 2.1Please insert CD into your computer's CD-ROM driver, it will operate automatically, if not, pls double click the "autorun.exe", the file can be opened.

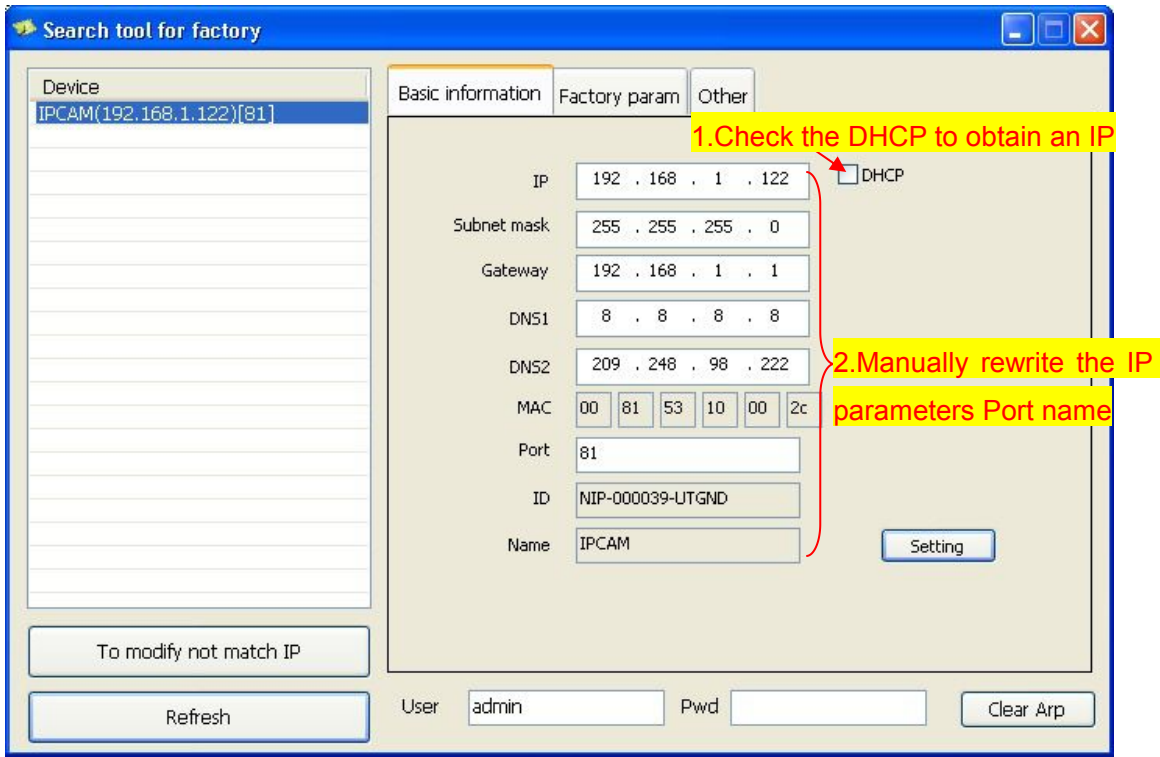


Click “search.exe”, Follow the tips , LAN tool is installed into the system and generated

on the desktop“IP Camera Search ” 

•2.2 Search the device and login

The LAN run search tools "IP Camera Search", the program will find the network cameras and displays the search to the IP address, port number, the name. If WIFI wireless connected, it will display the IP address of the wireless. As shown,

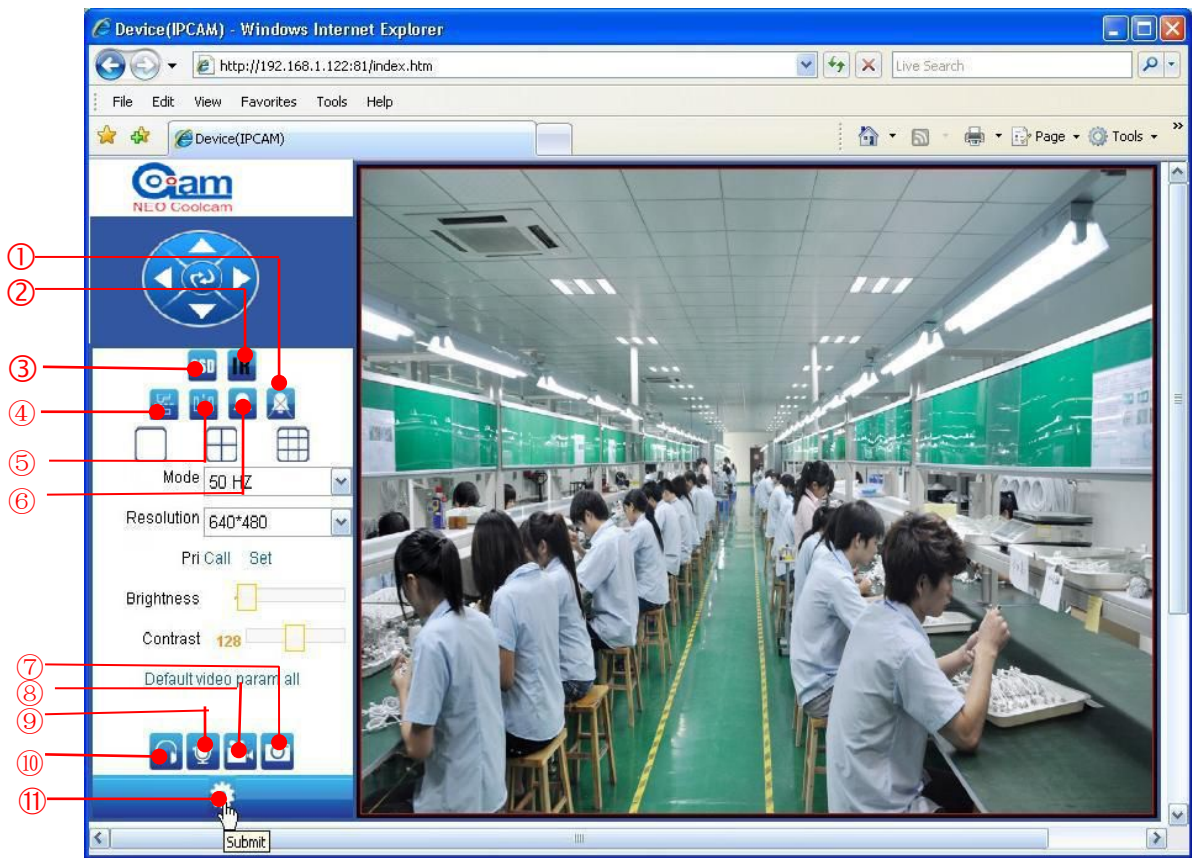


To select Basic information can change the parameters, click Set to save the changes

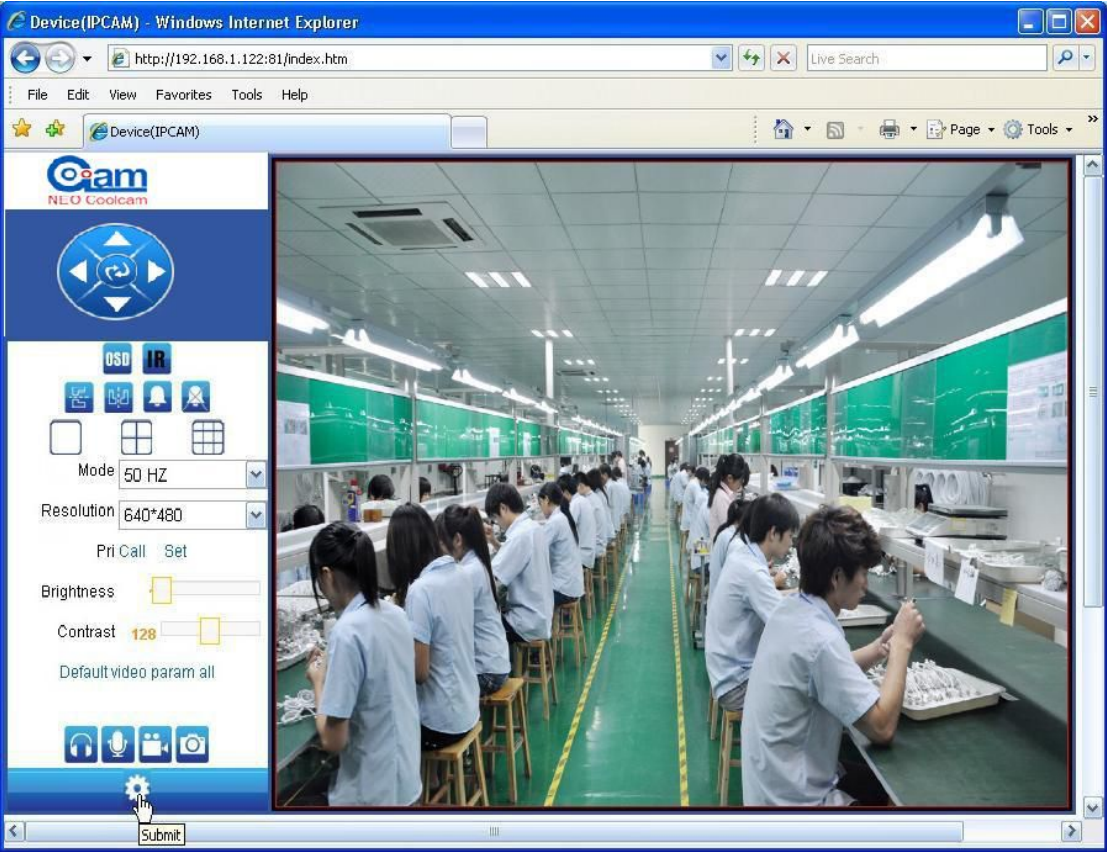
•and enter the IP address directly open the login authentication page (for example, enter: http://192.168.1.122: 81)to open the login screen as shown below shown,



•After entering the correct user name and password and click "OK" to open the monitor screen click on the appropriate browser model.



- 1.Alarm open 2.Software control lamp 3.Display date time 4.Upside down 5.About flip
- 6.Alarm 7,Capture 8.Video 9.Intercom 10.Voice 11.Set
- Into the picture settings



● Basic equipment

Device Status	
Device Firmware Version	81.2.64.132
Device Embeded Web UI Version	20.26.1.0.28
Alias	200ZX
Device ID	NIP-111401-EBAFF
Alarm Status	None
UPnP Status	UPnP Succeed
DDNS Status	No Action
MAC	00:6E:06:44:4A:3F
WIFI MAC	00:6E:06:44:4A:40
Externwifi status	Externwifi Error
sd total capacity(M)	0 M
sd remaining capacity(M)	0 M
sd state	sd card is not inserted
Language	English

Refresh

● Device name setting

Device basic information

Device information

Alias Settings

Device date&Time Settings

Record Path

Record Schedule

SD card video playback online

Alarm Service Settings

Alarm Service Settings

Mail Service Settings

Alarm Log

Network configuration

Basic Network Settings

Wireless Lan Settings

DDNS Service Settings

PTZ configuration

PTZ Settings

User&device manage

Multi-Device Settings

Users Settings

Maintain

Back

Alias Settings

Alias

200ZX

Submit

Refresh

Modify the camera name

● Device’s clock settings

Device basic information

Device Information

Alias Settings

Device date&Time Settings

Record Path

Record Schedule

SD card video playback online

Alarm Service Settings

Alarm Service Settings

Mail Service Settings

Alarm Log

Network configuration

Basic Network Settings

Wireless Lan Settings

DDNS Service Settings

PTZ configuration

PTZ Settings

User&device manage

Multi-Device Settings

Users Settings

Maintain

Back

Device date&Time Settings

Device Clock Time

Wed, 21 May 2014 14:22:02 UTC

Device Clock Timezone

(GMT +08:00) Beijing, Singapore, Taipei

Sync with NTP Server

☒

Ntp Server

time.nist.gov

Sync with PC Time

Select the device time zone,
Use PC sync time

● Local video

Device basic information

Device Information

Alias Settings

Device date&Time Settings

Record Path

Record Schedule

SD card video playback online

Alarm Service Settings

Alarm Service Settings

Mail Service Settings

Alarm Log

Network configuration

Basic Network Settings

Wireless Lan Settings

DDNS Service Settings

PTZ configuration

PTZ Settings

User&device manage

Multi-Device Settings

Users Settings

Maintain

Back

Record Path

Record Path

C:\

select

Record file length(MB)

100

Least 100MB , MAX 1000MB

Record time length(Minute)

5

Least 5 Minutes , MAX 120 Minutes

Reserved disk space(MB)

200

Least 200MB

Record cover

☐

Submit

Refresh

1.Modify video save path

2.Set video pack size ,min100M

3.Set video package length

Video coverage: when there is insufficient storage space covers the most early video files

● SD card recording scheme

Record Schdule

sd total capacity(M)

0 M

sd remaining capacity(M)

0 M

sd state

sd card is not inserted

Format

Record coverage

☒

Record time(minute)

5

Recording time range: 5~180 minutes

Timer recording

☒

select all

☒

Day

0

1

2

3

4

5

6

7

8

9

10

11

12

13

14

15

16

17

18

19

20

21

22

23

Sun

Mon

Tue

Wed

Thu

Fri

Sat

Select time video

Choose video duration

Submit

Refresh

● SD card playback

Device basic information		Device Status	
Device information	Device Firmware Version	81.2.64.132	
Alias Settings	Device Embedded Web UI Version	20.26.1.0.28	
Device date&Time Settings	Alias	200ZX	
Record Path	Device ID	NIP-111401-EBAFF	
Record Schedule	Alarm Status	None	
SD card video playback online	UPnP Status	UPnP Succeed	
Alarm Service Settings	DDNS Status	No Action	
Alarm Service Settings	MAC	00:6E:06:44:4A:3F	
Mail Service Settings	WIFI MAC	00:6E:06:44:4A:40	
Alarm Log	Externwifi status	Externwifi Error	
Network configuration	sd total capacity(M)	0 M	
Basic Network Settings	sd remaining capacity(M)	0 M	
Wireless Lan Settings	sd state	sd card is not inserted	
DDNS Service Settings	Language	English	
PTZ configuration			
PTZ Settings			
User&device manage			
Multi-Device Settings			
Users Settings			
Maintain			
Back			

Refresh

● Alarm service settings

Device basic information		Alarm Service Settings	
Device information	Motion Detect Armed	<input checked="" type="checkbox"/>	
Alias Settings	Motion Detect Sensibility	5	
Device date&Time Settings	Alarm Input Armed	<input type="checkbox"/>	
Record Path	SD Record Enabled	<input checked="" type="checkbox"/>	
Record Schedule	Alarm trigger event		
SD card video playback online	Alarm preset linkage	None	
Alarm Service Settings	IO Linkage on Alarm	<input type="checkbox"/>	
Alarm Service Settings	Send Alarm Notification by Mail	<input checked="" type="checkbox"/>	
Mail Service Settings	Alarm Arming Time		
Alarm Log	Scheduler	<input checked="" type="checkbox"/>	
Network configuration	select all	<input checked="" type="checkbox"/>	
Basic Network Settings	Day	0 1 2 3 4 5 6 7 8 9 10 11 12 13 14 15 16 17 18 19 20 21 22 23	
Wireless Lan Settings	Sun		
DDNS Service Settings	Mon		
PTZ configuration	Tue		
PTZ Settings	Wed		
User&device manage	Thu		
Multi-Device Settings	Fri		
Users Settings	Sat		
Maintain			
Back			

Submit Refresh

● Mail service settings

Device basic information		Mail Service Settings	
Device information	Sender	944304744@qq.com	
Alias Settings	SMTP Server	smtp.qq.com	
Device date&Time Settings	SMTP Port	25	
Record Path	Need Authentication	<input checked="" type="checkbox"/>	
Record Schedule	SSL	NONE	
SD card video playback online	SMTP User	944304744	
Alarm Service Settings	SMTP Password	
Alarm Service Settings	Receiver 1	2323780751@qq.com	
Mail Service Settings	Receiver 2		
Alarm Log	Receiver 3		
Network configuration	Receiver 4		
Basic Network Settings	Test	Please set at first, and then test.	
Wireless Lan Settings			
DDNS Service Settings			
PTZ configuration			
PTZ Settings			
User&device manage			
Multi-Device Settings			
Users Settings			
Maintain			
Back			

Submit Refresh

After setting the parameters, click Test settings

● Alarm Log

Device basic information

Device information

Alias Settings

Device date&Time Settings

Record Path

Record Schedule

SD card video playback online

Alarm Service Settings

Alarm Service Settings

Mail Service Settings

Alarm Log

Network configuration

Basic Network Settings

Wireless Lan Settings

DDNS Service Settings

PTZ configuration

PTZ Settings

User&device manage

Multi-Device Settings

Users Settings

Maintain

Back

Alarm Log

motion alarm 2014-05-01 22:19:10

motion alarm 2014-05-01 22:05:22

motion alarm 2014-05-01 18:26:50

motion alarm 2014-05-01 18:04:13

motion alarm 2014-05-01 17:54:39

motion alarm 2014-05-01 17:40:07

motion alarm 2014-05-01 17:39:23

motion alarm 2014-05-01 17:38:38

motion alarm 2014-05-01 17:37:57

motion alarm 2014-05-01 17:37:25

motion alarm 2014-05-01 17:36:49

motion alarm 2014-05-01 17:35:11

motion alarm 2014-05-01 17:34:41

motion alarm 2014-05-01 17:33:58

motion alarm 2014-05-01 17:33:07

motion alarm 2014-05-01 17:32:29

motion alarm 2014-05-01 17:31:57

motion alarm 2014-05-01 17:31:18

motion alarm 2014-05-01 17:30:24

motion alarm 2014-05-01 17:29:52

motion alarm 2014-05-01 17:29:19

motion alarm 2014-05-01 17:28:47

motion alarm 2014-05-01 17:28:09

motion alarm 2014-05-01 17:27:39

motion alarm 2014-05-01 17:27:08

motion alarm 2014-05-01 17:26:32

motion alarm 2014-05-01 17:25:45

motion alarm 2014-05-01 17:25:03

clear

Refresh

View the alarm recording logs

● Basic network settings

Device basic information

Device information

Alias Settings

Device date&Time Settings

Record Path

Record Schedule

SD card video playback online

Alarm Service Settings

Alarm Service Settings

Mail Service Settings

Alarm Log

Network configuration

Basic Network Settings

Wireless Lan Settings

DDNS Service Settings

PTZ configuration

PTZ Settings

User&device manage

Multi-Device Settings

Users Settings

Maintain

Back

Basic Network Settings

Obtain IP from DHCP Server

☒

Http Port

8093

Submit

Refresh

Automatically assign IP addresses, users also can own fixed IP address

2.3 Wireless network settings

Tick in the " wireless LAN " behind . You want to connect to and select SSID , the input selection SSID password , as shown below:

Device basic information

Device information

Alias Settings

Device date&Time Settings

Record Path

Alarm Service Settings

Alarm Service Settings

Mail Service Settings

Ftp Service Settings

Alarm Log

Network configuration

Basic Network Settings

Wireless Lan Settings

DDNS Service Settings

PTZ configuration

PTZ Settings

User&device manage

Multi-Device Settings

Wireless Lan Settings

Wireless Network List

ID

SSID

MAC

1

NTEST3

8C:21:0A:A8:EC:78

2

FAST_6274D4

F4:EC:38:62:74:D4

3

NTEST2

94:0C:6D:14:C2:E8

4

testmeng &&&

00:23:CD:8D:10:9A

5

test00

00:23:CD:89:05:46

Scan

1. Click the Search button

Using Wireless Lan

☒

SSID

NTEST2

Network Type

Infra

3. Enter the wireless network password

Authentication

WPA-PSK Personal (TKIP)

Share Key

123456

Submit

Refresh

●2.4 DDNS settings

ipcam(DDNS built-in) no need settings

Select service providers: Please select a server of the service provider, such as :
dyndns.org、3322.org、365home.org

Application domain address: Fill in the user application domain address, as shown
below:(Demo.dyndns.org)

User name and password: fill in the the DDNS account number and password, if you use
the ipcam domain name, you can find the username and password in the camera tab:
DDNS account and password.

Device basic information

Device information

Alias Settings

Device date&Time Settings

Record Path

Alarm Service Settings

Alarm Service Settings

Mail Service Settings

Ftp Service Settings

Alarm Log

Network configuration

Basic Network Settings

Wireless Lan Settings

DDNS Service Settings

PTZ configuration

PTZ Settings

User&device manage

Multi-Device Settings

DDNS Service Settings

DDNS Service	DynDns.org(dyndns)
DDNS User	Demo
DDNS Password	*****
DDNS Host	Demo.dyndns.org
DDNS Status	No Action

proxy config is needed if the device is in China Mainland or HongKong

SubmitRefresh

Extranet landing camera simply in the browser address bar and transportation equipment
DDNS domain name address plus port number of the camera you can access the IP
camera !

● PTZ

Device basic information

Device information

Alias Settings

Device date&Time Settings

Record Path

Record Schedule

SD card video playback online

Alarm Service Settings

Alarm Service Settings

Mail Service Settings

Alarm Log

Network configuration

Basic Network Settings

Wireless Lan Settings

DDNS Service Settings

PTZ configuration

PTZ Settings

User&device manage

Multi-Device Settings

Users Settings

Maintain

Back

PTZ Settings

Singal lamp	open
against pre-bit	<input type="checkbox"/>
Call Preset on boot	Disable
PTZ speed	MED
Cruise Views	Always
Stop Position	Disable

SubmitRefresh

● Multi -channel device settings

Device basic information

Device information

Alias Settings

Device date&Time Settings

Record Path

Record Schedule

SD card video playback online

Alarm Service Settings

Alarm Service Settings

Mail Service Settings

Alarm Log

Network configuration

Basic Network Settings

Wireless Lan Settings

DDNS Service Settings

PTZ configuration

PTZ Settings

User&device manage

Multi-Device Settings

Users Settings

Maintain

Back

Multi-Device Settings

Device List in Lan

OutdoorVGA(192.168.1.102)

20OZX(192.168.1.37)

IPCamera(192.168.1.26)

Outdoor720P(192.168.1.68)

Refresh

The 1st Device

This Device

The 2nd Device

None

Alias

20OZX

Host

192.168.1.37

Http Port

8093

User

Password

Add

Remove

The 3rd Device

None

The 4th Device

None

The 5th Device

None

The 6th Device

None

The 7th Device

None

The 8th Device

None

The 9th Device

None

Add multiple devices can implement page-image view

attention: If you want to access the device from internet, be sure the host and port that you set can be accessed from internet.

1. double-click the second device

2. refresh the current LAN cameras

3. double-click the device

4. Enter your user name and password

● User setting s for the device

Users Settings

	User	Password
Visitor		
Operator		
Administrator	admin	

Add users and modify password

Submit

Refresh

● Maintain

Device basic information

Device information

Alias Settings

Device date&Time Settings

Record Path

Record Schedule

SD card video playback online

Alarm Service Settings

Alarm Service Settings

Mail Service Settings

Alarm Log

Network configuration

Basic Network Settings

Wireless Lan Settings

DDNS Service Settings

PTZ configuration

PTZ Settings

User&device manage

Multi-Device Settings

Users Settings

Maintain

Back

Upgrade Device Firmware

Restore Factory Settings

Restore Factory Settings

Reboot Device

Reboot Device

Upgrade Device Firmware

浏览...

Upgrade

Upgrade Device Embedded Web UI

浏览...

Upgrade

1. restore factory settings

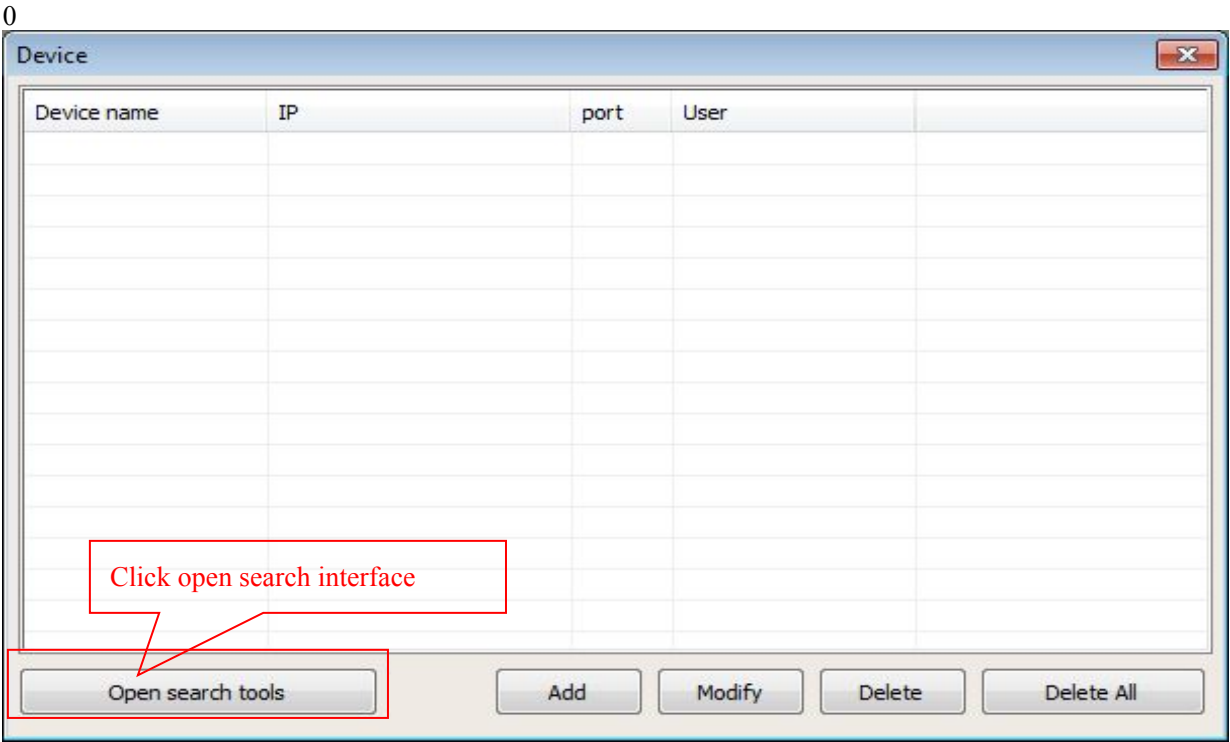
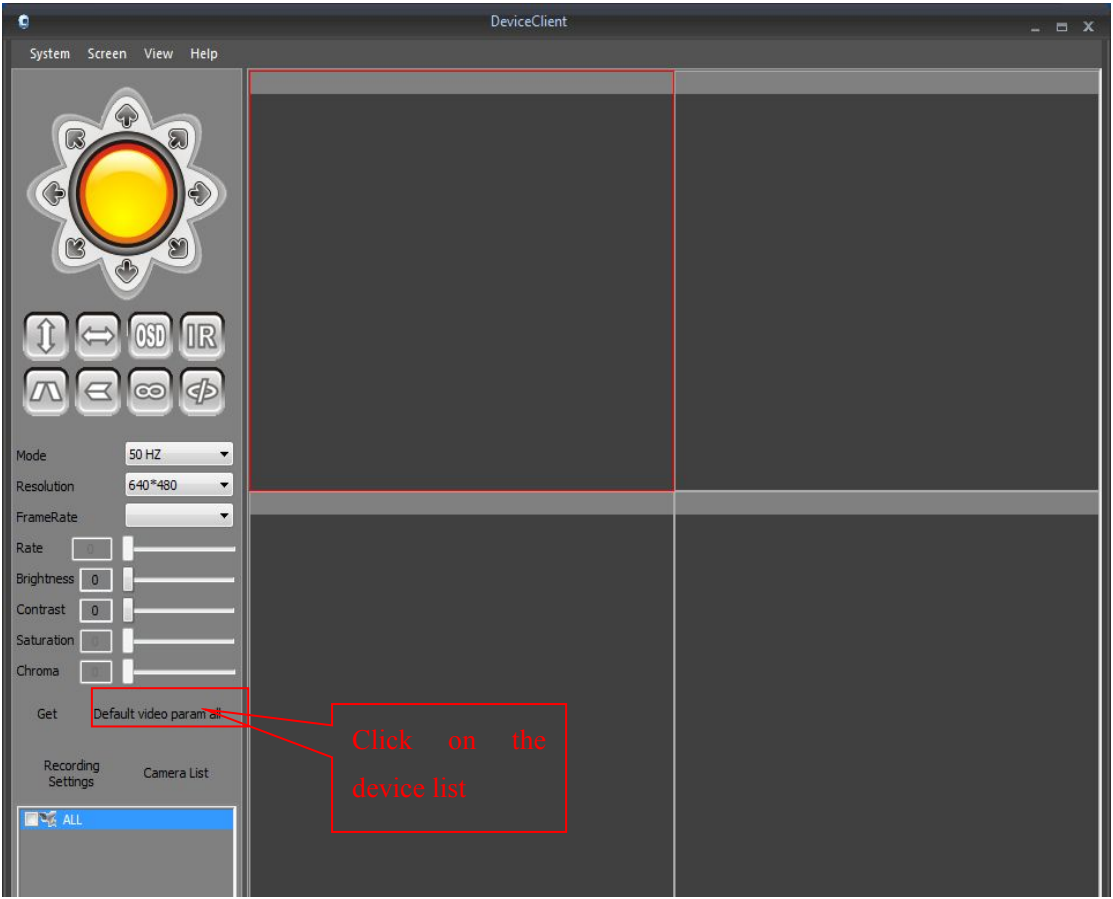
2.Reboot a unit

3.Upgrade the system firmware

4.Upgrade the application firmware

3. Installation plug-and-play software.

Install the plug and play software DeviceClient  ,After installed, the icon will display on the screen, click to open it to view. Click "Devices list"  ,Double-click search camera ID Online to add LAN camera in the pop-up box click "Open search interface"



Device name	IP	port	DID
Wrokshop	192.168.1.58	8110	NIP-000022-MBXNE
Outdoor720P	192.168.1.68	81	NIP-000095-MEXMS
OutdoorVGA	192.168.1.102	8109	NIP-001556-RBSRF
IPCamera	192.168.1.41	81	
20OZX	192.168.1.147	8093	NIP-111401-EBAFF

4.double-click the list of devices

3.Click on search

Searching

Device Name: 20OZX (Device name the default "IPCAM")

Device IP: 192.168.1.147 Device port: 8093

User Name: admin (Default user name Admin) Password: (Default password is blank)

P2P: ☒

ID: NIP-111401-EBAFF (Camera ID number)

5.Click on OK

OK Cancel

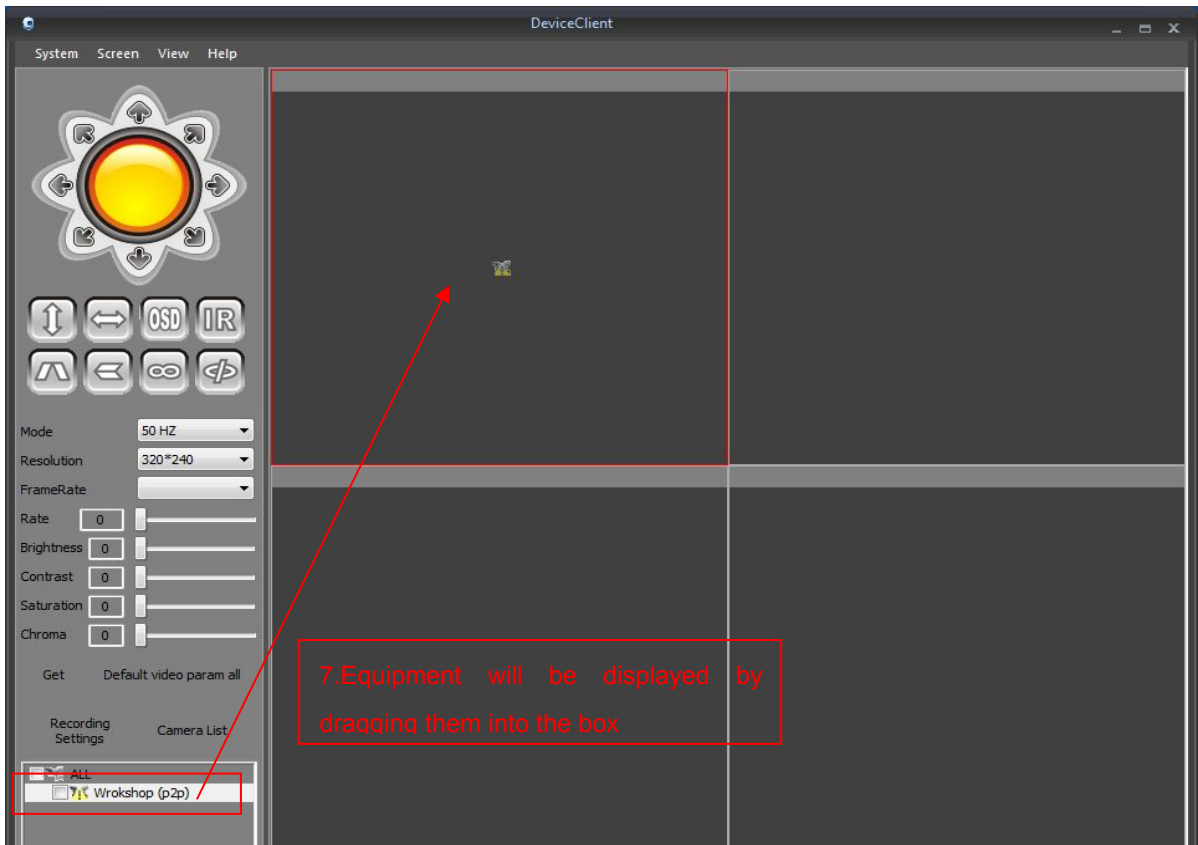
Note: using a video camera for the first time users are advised to go to the client "user management" set a security password for the camera, or use IE browser to access the camera's settings "device settings" to set your password.

Device

Device name	IP	port	User
20OZX	NIP-111401-EBAFF		admin

6.Close the device list

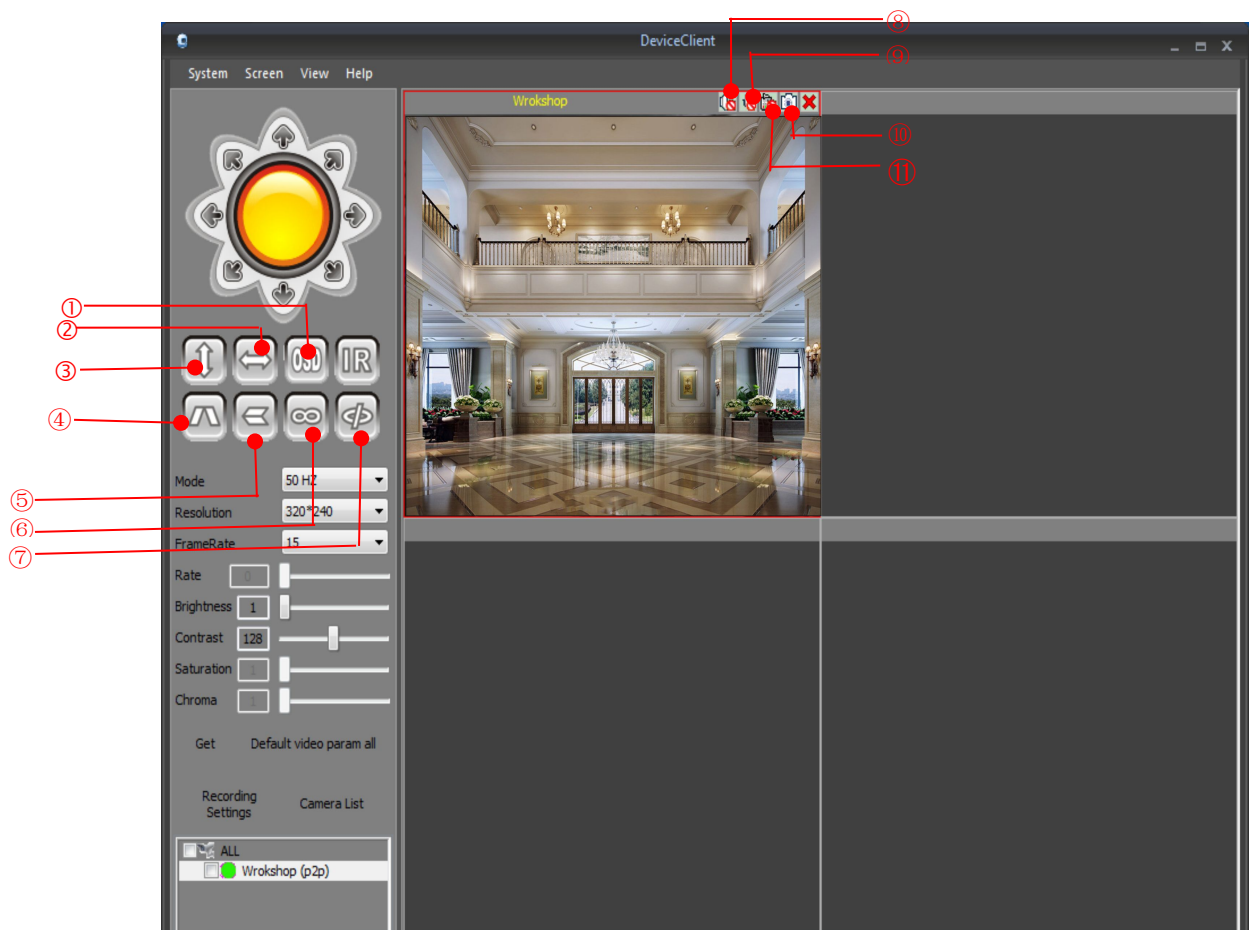
Close search tools Add Modify Delete Delete All



Now we can watch the monitor screen

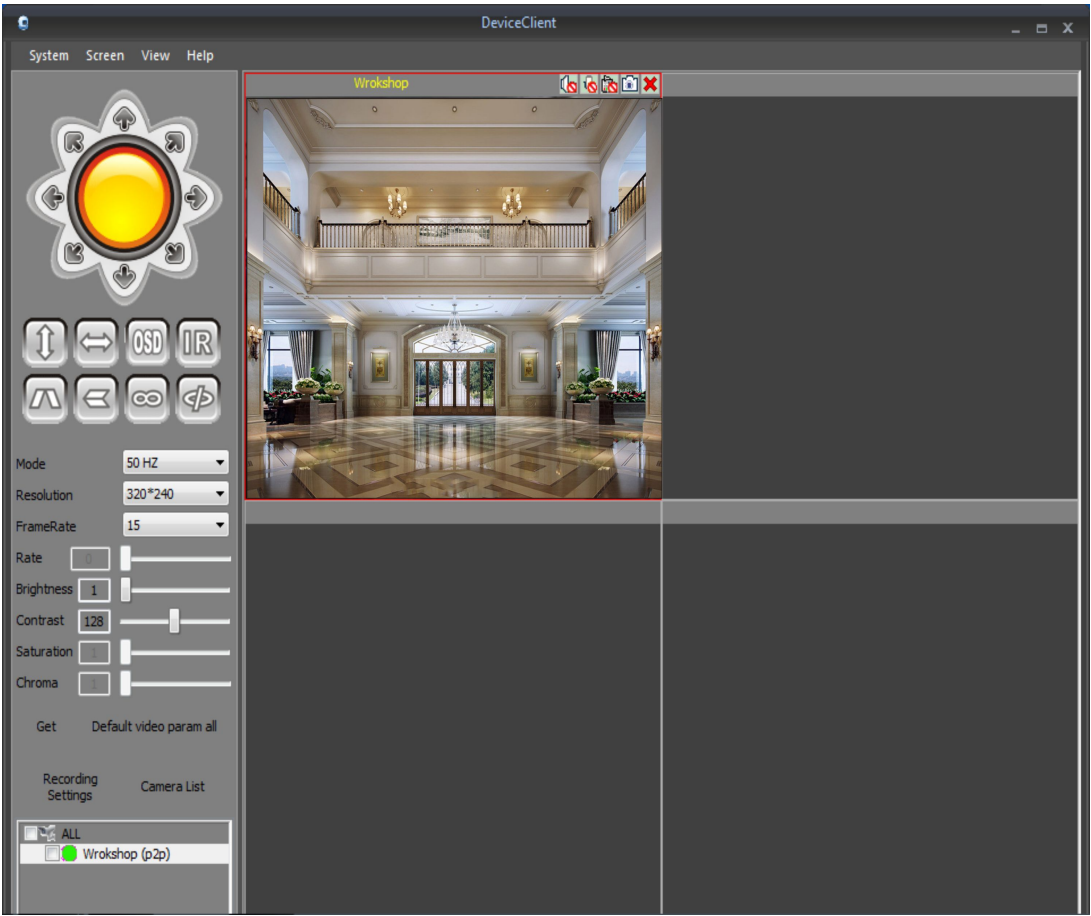
● **Monitor interface button descriptions**

- 1.Displays the time the cameras and names 2.About cruising 3.Cruise 4.About flip
- 5.Upside down 6.Alarm switch is closed 7.Alarm switch opens 8.Sound
- 9.Intercom 10.Video 11.Capture

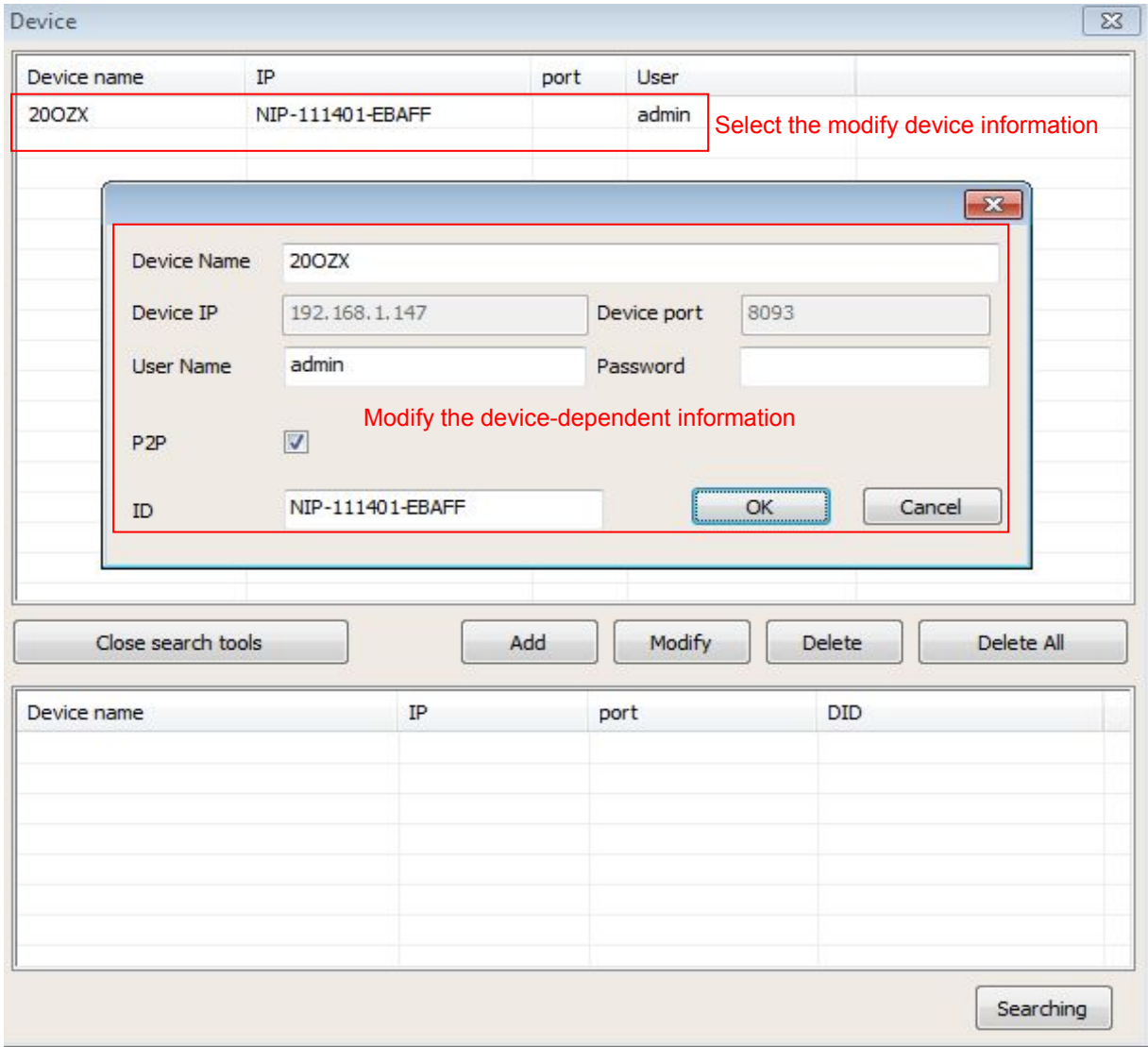


4.Delete, modify the camera

Click on the "devices list" in the "device" interface, click on the "modify" camera camera information can be modified.

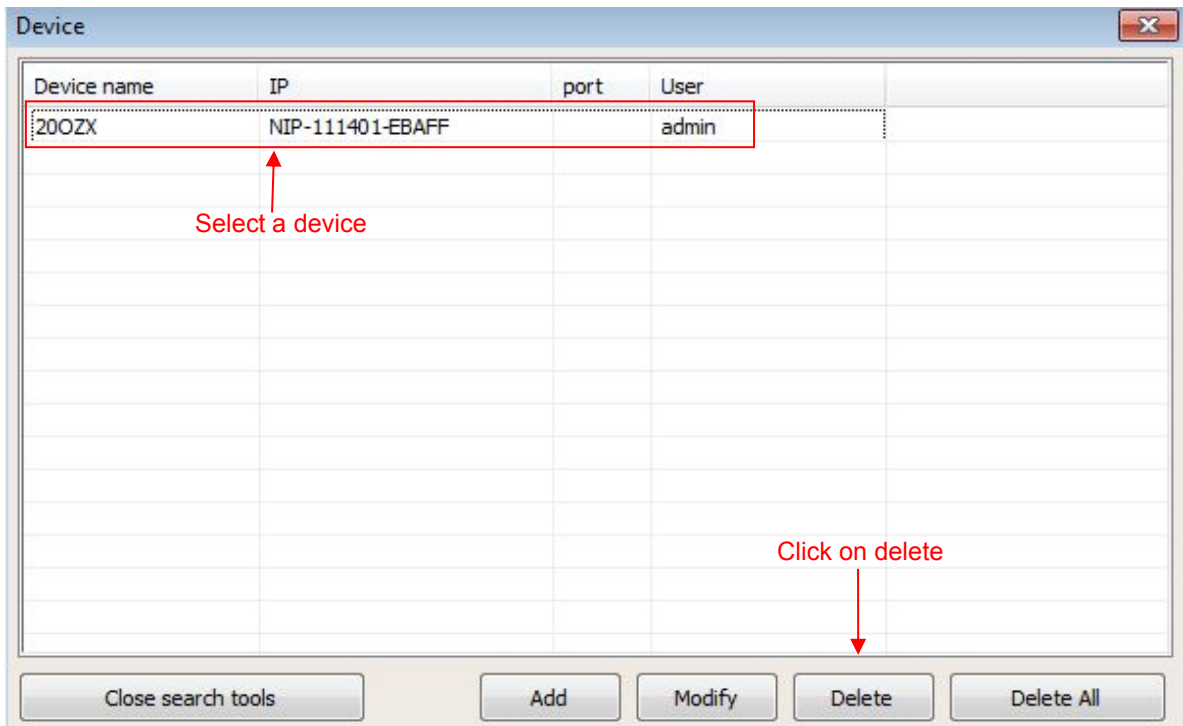


● Modify the information



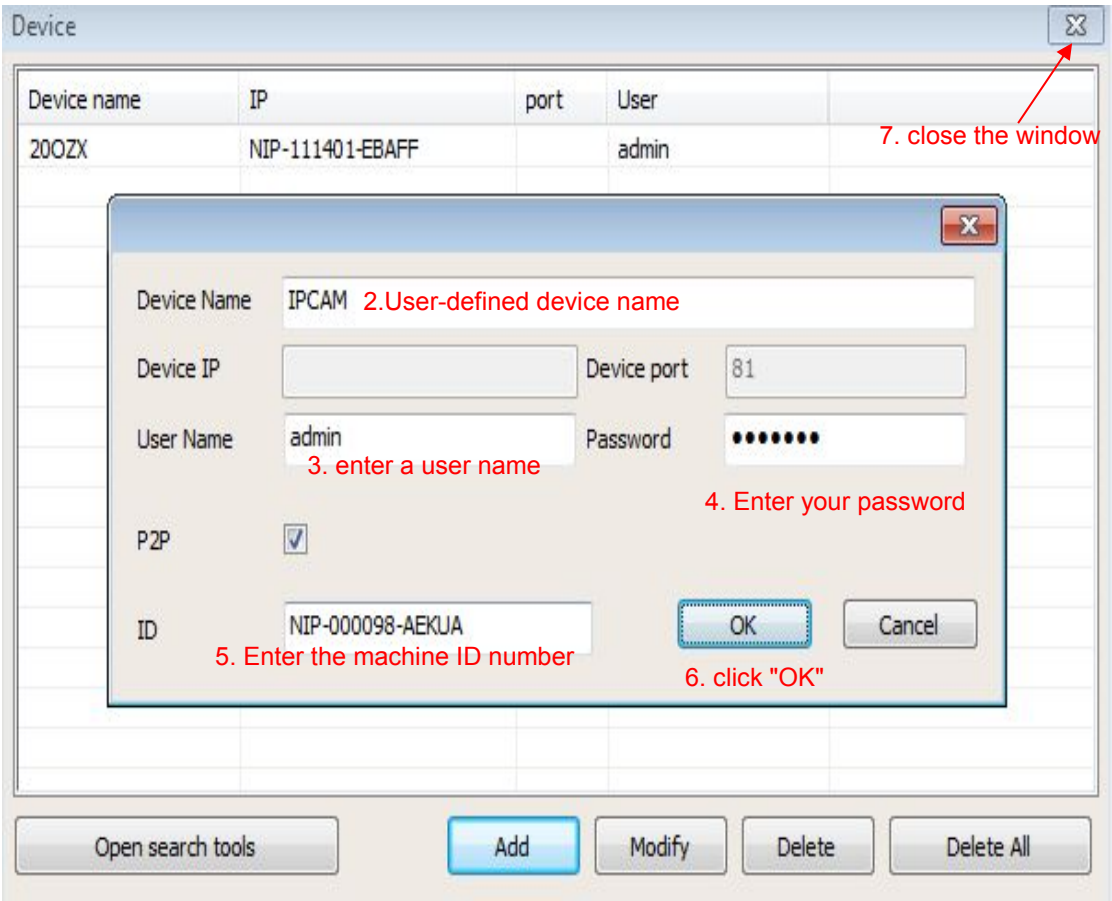
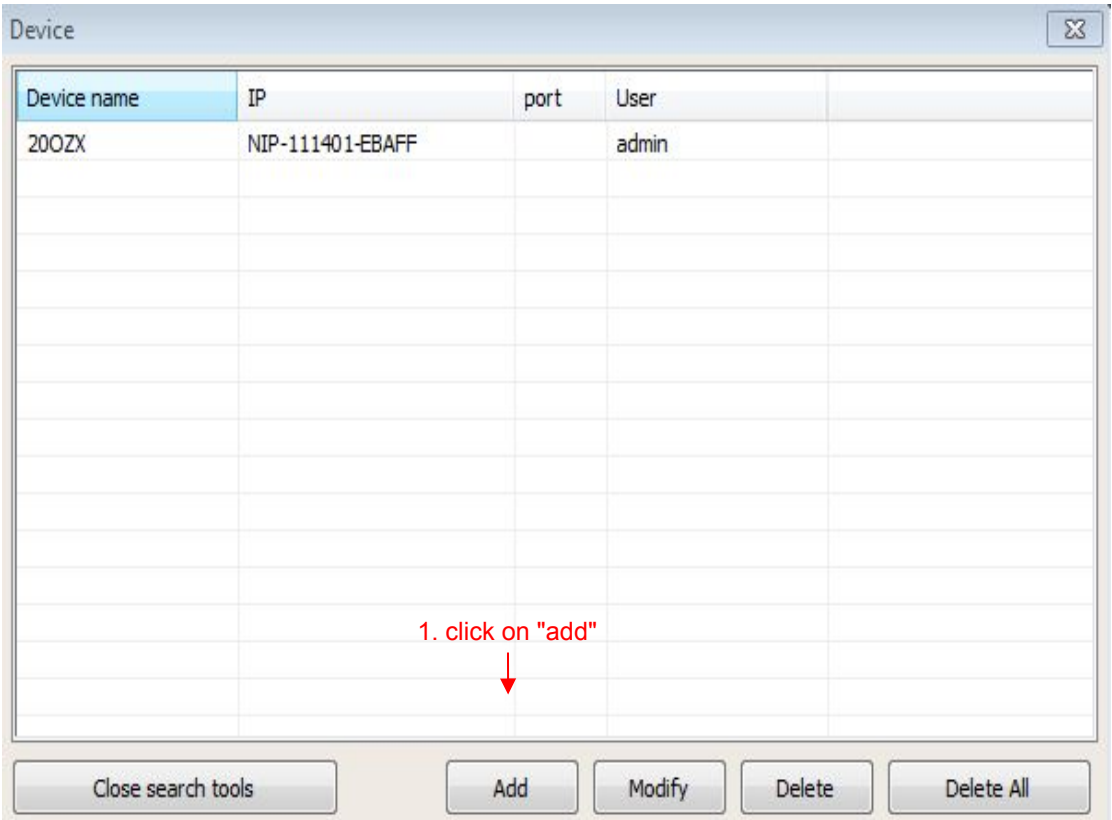
● **Remove the device**

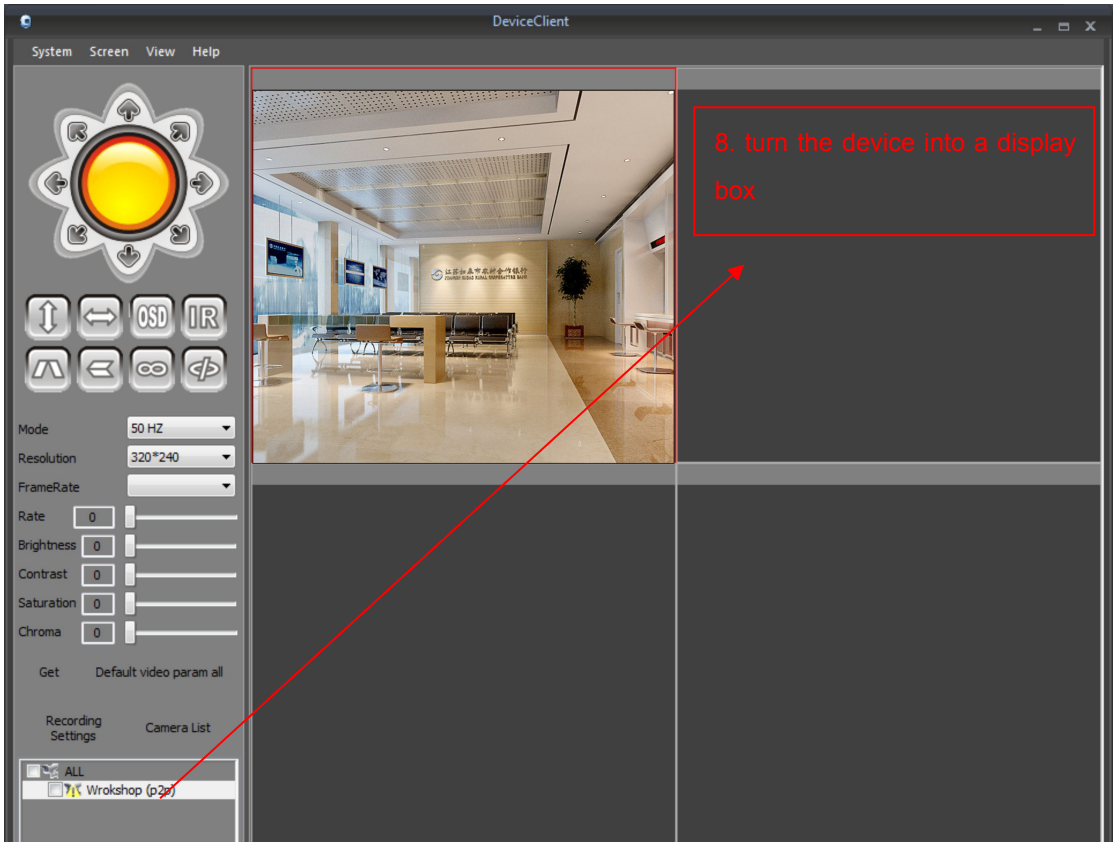
Click on the "devices list" in the "device" interface, click on the "delete", a device can be deleted



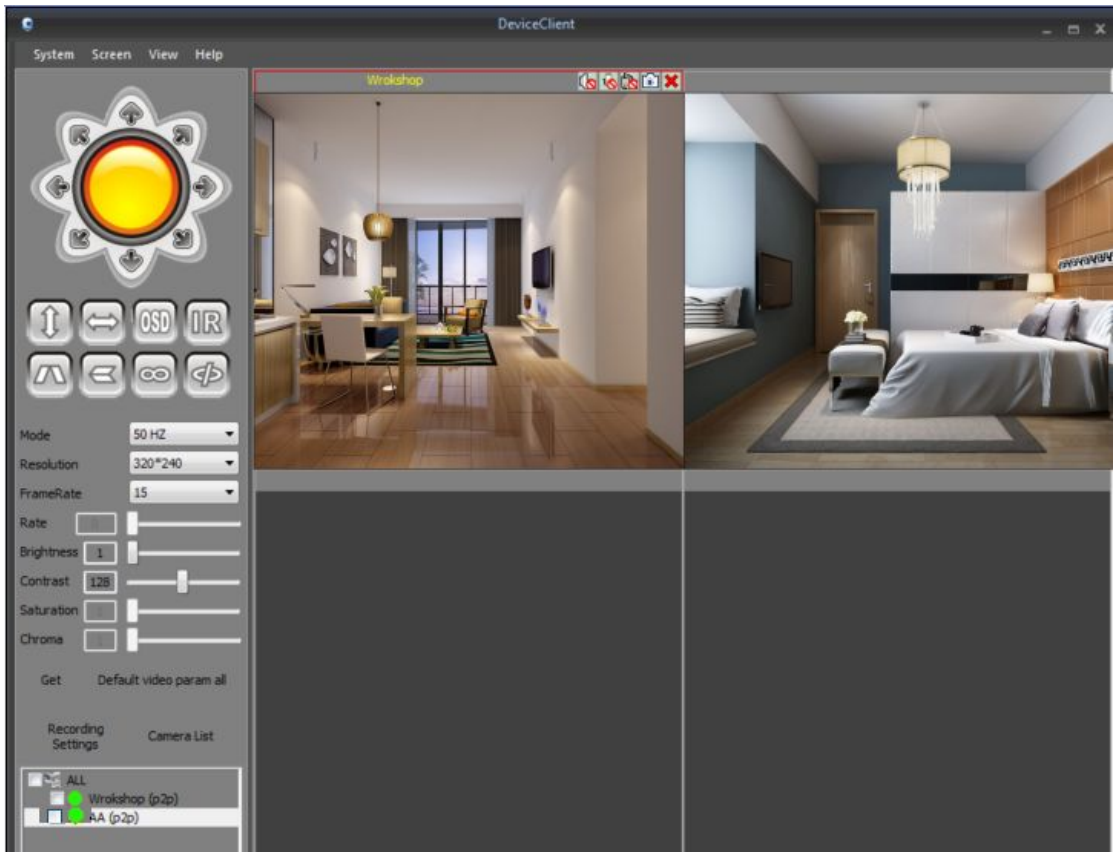
4.1 Add remote access video camera

- Add remote access video camera





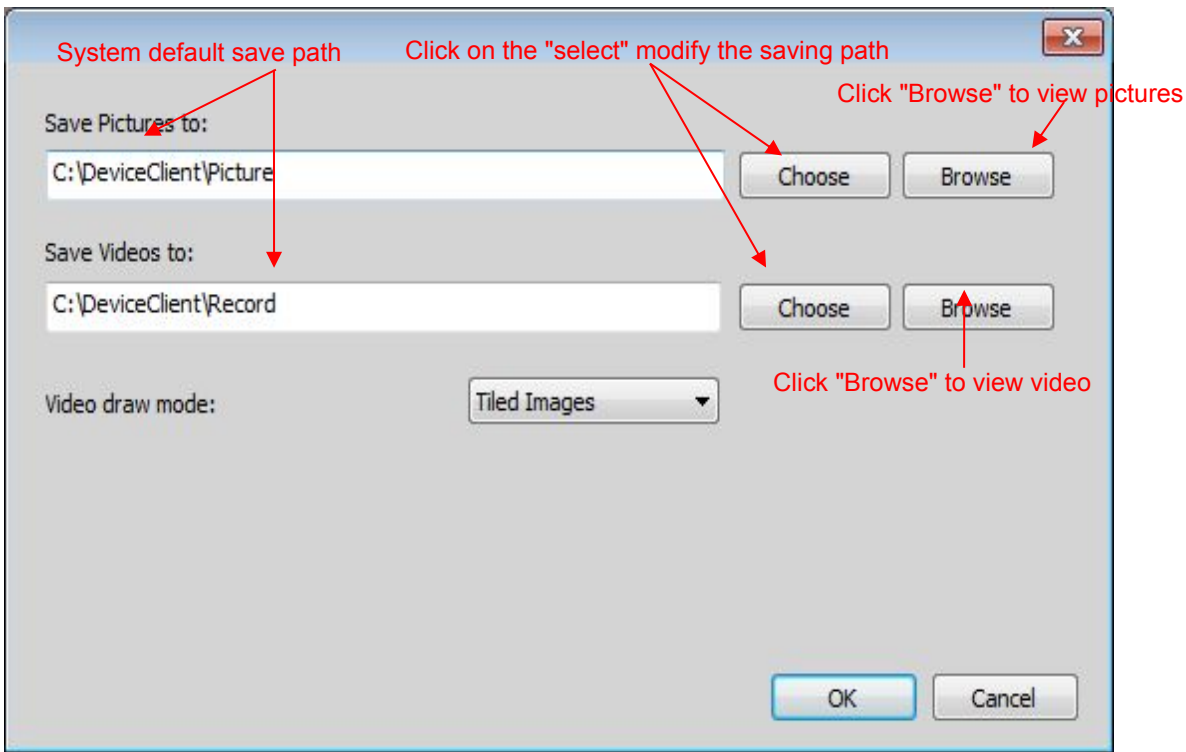
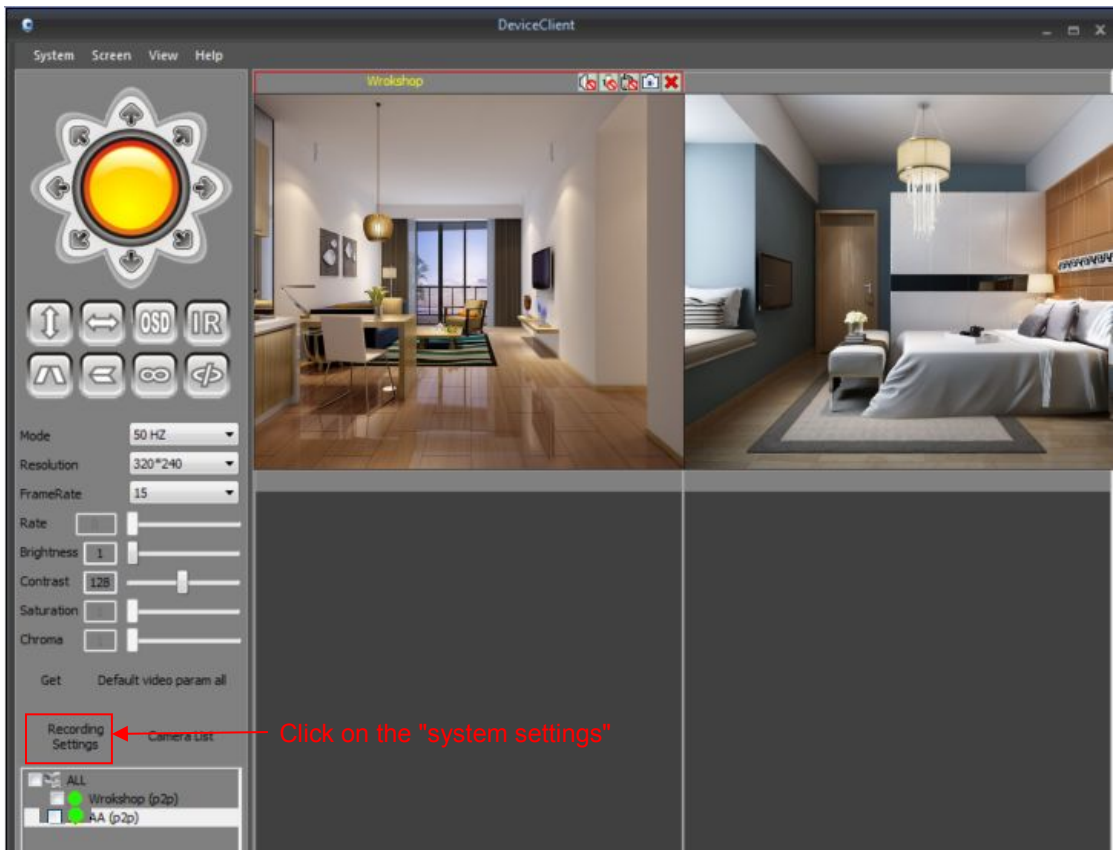
- Now we can watch the monitor screen



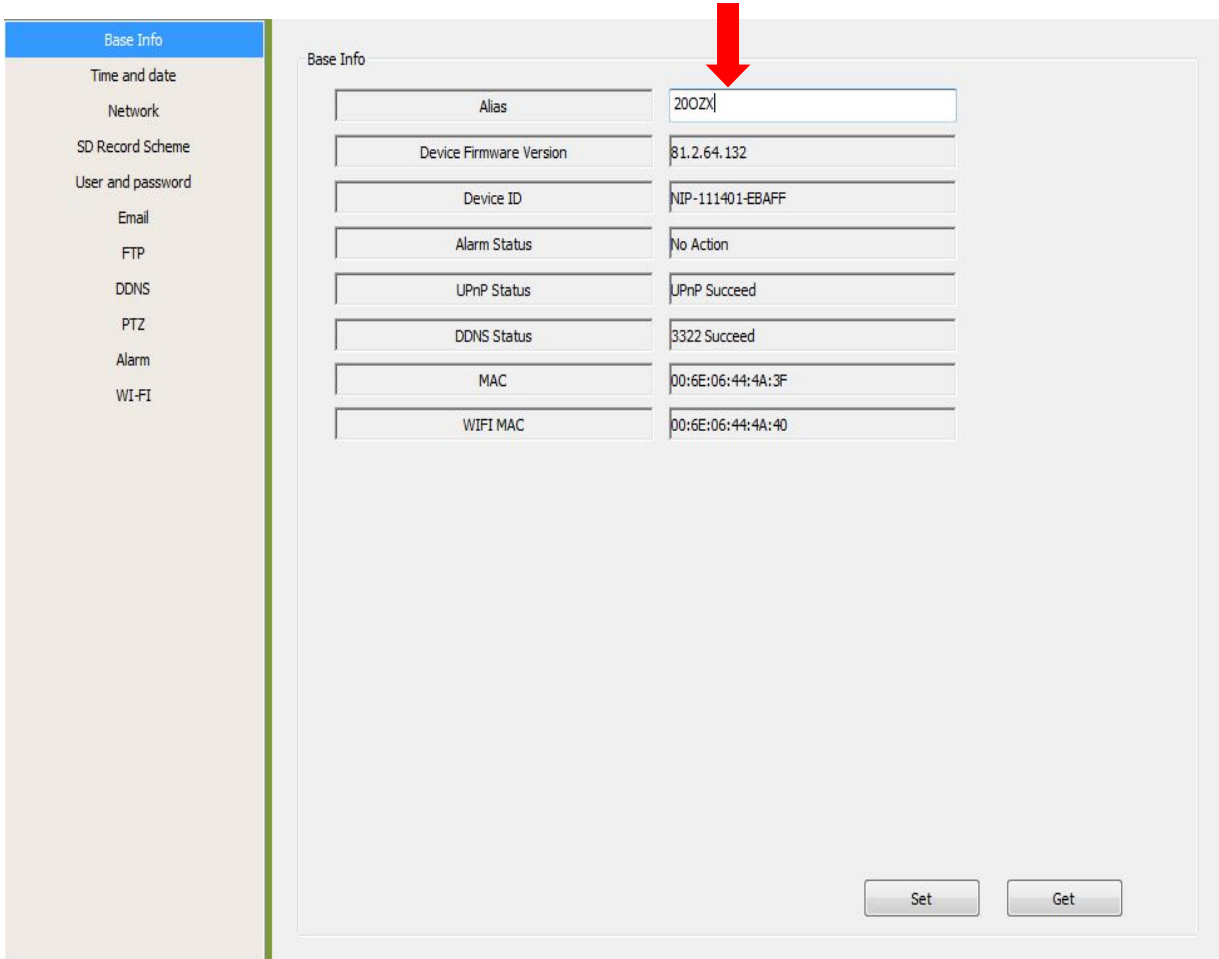
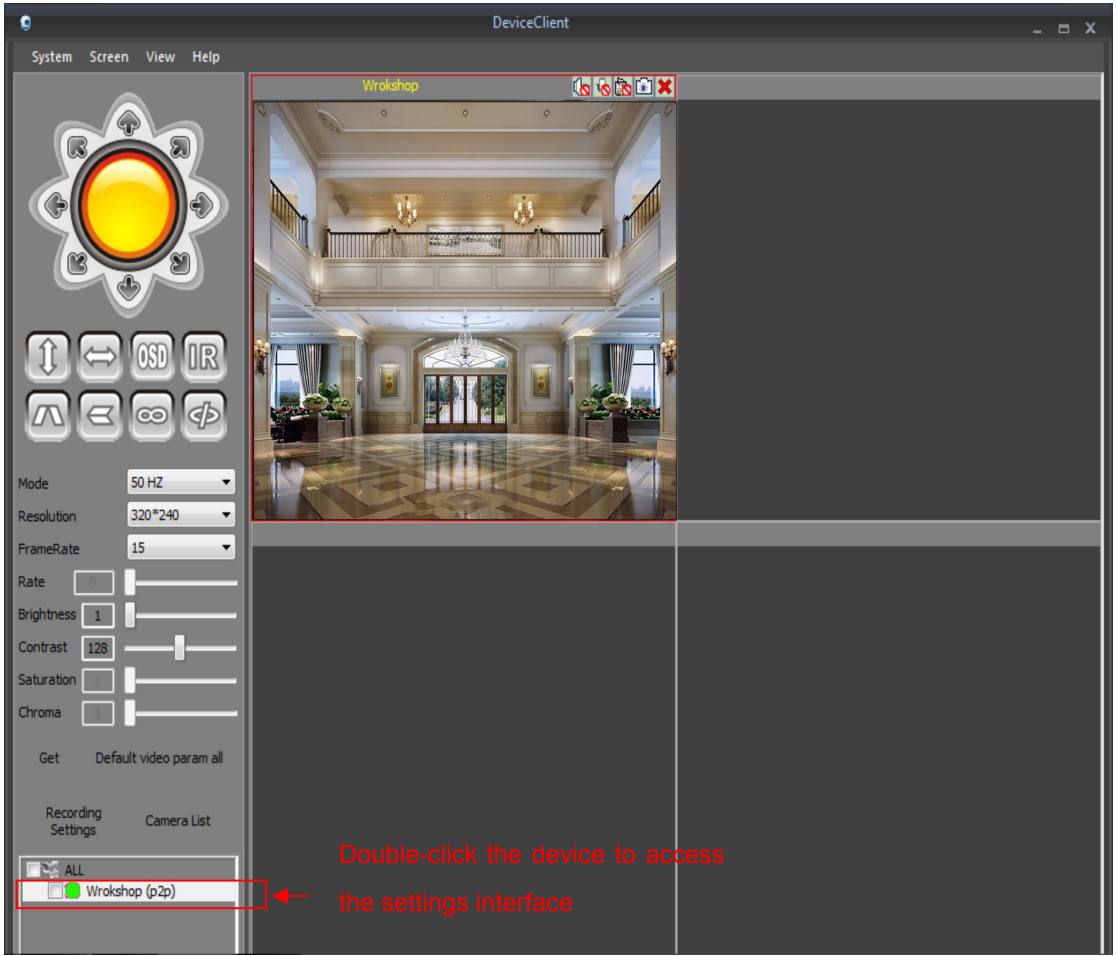
4.1 Voice intercom, video, camera

- Device to take pictures, and video viewing

Click on the "system settings" viewing photos and videos



5.Set



5.1 The date and time

Base Info

Time and date

Network

SD Record Scheme

User and password

Email

FTP

DDNS

PTZ

Alarm

WI-FI

Time and date

Device Clock Time

Friday 23 May, 2014 14:24:36

Device Clock Timezone

(GMT +08:00) Beijing, Singapore, Taipei

Sync with NTP Server

☒

Ntp Server

time.nist.gov

Sync with PC Time

Sync with PC Time

New PC-side and computer time synchronization

Set

Get

5.2 Network parameters

Base Info

Time and date

Network

SD Record Scheme

User and password

Email

FTP

DDNS

PTZ

Alarm

WI-FI

Network

Obtain IP from DHCP Server

☐

IP Address

192 . 168 . 1 . 147

Subnet Mask

255 . 255 . 255 . 0

Gateway

192 . 168 . 1 . 1

DNS Server 1

8 . 8 . 8 . 8

DNS Server 2

8 . 8 . 8 . 8

Http Port

8093

Customers can own fixed IP address and modify the camera port

Set

Get

5.3 Recording schedule

Base Info

Time and date

Network

SD Record Scheme

User and password

Email

FTP

DDNS

PTZ

Alarm

WI-FI

SD Record Scheme

Total capacity

0MB

Remaining capacity

0MB

sd status

sd card isn't inserted

Format

Record coverage

☒ ①

record time

5

Least 5 Minutes , MAX 120 Minutes

Timer recording

☒

select all

☒

Day	0	1	2	3	4	5	6	7	8	9	10	11	12	13	14	15	16	17	18	19	20	21	22	23
Sun																								
Mon																								
Tue																								
Wed																								
Thu																								
Fri																								
Sat																								

1.Check video coverage, insufficient storage SD card will be overwritten when the previous video files

Set

Get

Video coverage: when the storage space is low, a video file will overwrite the earliest recorded file.

Video duration: minimum 5 minutes, maximum 120 minutes.

5.4 User management

Base Info

Time and date

Network

SD Record Scheme

User and password

Email

FTP

DDNS

PTZ

Alarm

WI-FI

User and password

User

Password

Visitor

☐ show password

Operator

☐ show password

Administrator

admin

☐ show password

Customers can add a user, modify a user's name and password

Note: the factory default user name is Admin, and no password

Set

Get

5.5 Mail Box settings

DeviceClient

Base Info

Time and date

Network

SD Record Scheme

User and password

Email

FTP

DDNS

PTZ

Alarm

WI-FI

Email

Sender

Demo@sina.com

SMTP Server

smtp.sina.com.cn

@sina.com

25

Need Authentication

☒

SSL

NONE

SMTP User

Demo

SMTP Password

Receiver

test@163.com

Receiver

test@yahoo.cn

Receiver

test@gmail.com

Receiver

Set

Get

Send email address

Send email Box is SMTP User name

Send email password is SMTP password

Recipient email address

5.6 Alarm setting

DeviceClient

Base Info

Time and date

Network

SD Record Scheme

User and password

Email

FTP

DDNS

PTZ

Alarm

WI-FI

Alarm

Motion Detect Armed

☒

5

Motion Detect Sensitivity

Alarm Input Armed

☐

Trigger Level

Alarm trigger event

Alarm preset linkage

IO Linkage on Alarm

☐

Low

Output Level

Send Alarm Notification by Mail

☒

Upload Image on Alarm

☐

0

Upload Image on Alarm

Alarm Arming Time

Scheduler

☒

select all

☐

Day	0	1	2	3	4	5	6	7	8	9	10	11	12	13	14	15	16	17	18	19	20	21	22	23
Sun																								
Mon																								
Tue																								
Wed																								
Thu																								
Fri																								
Sat																								

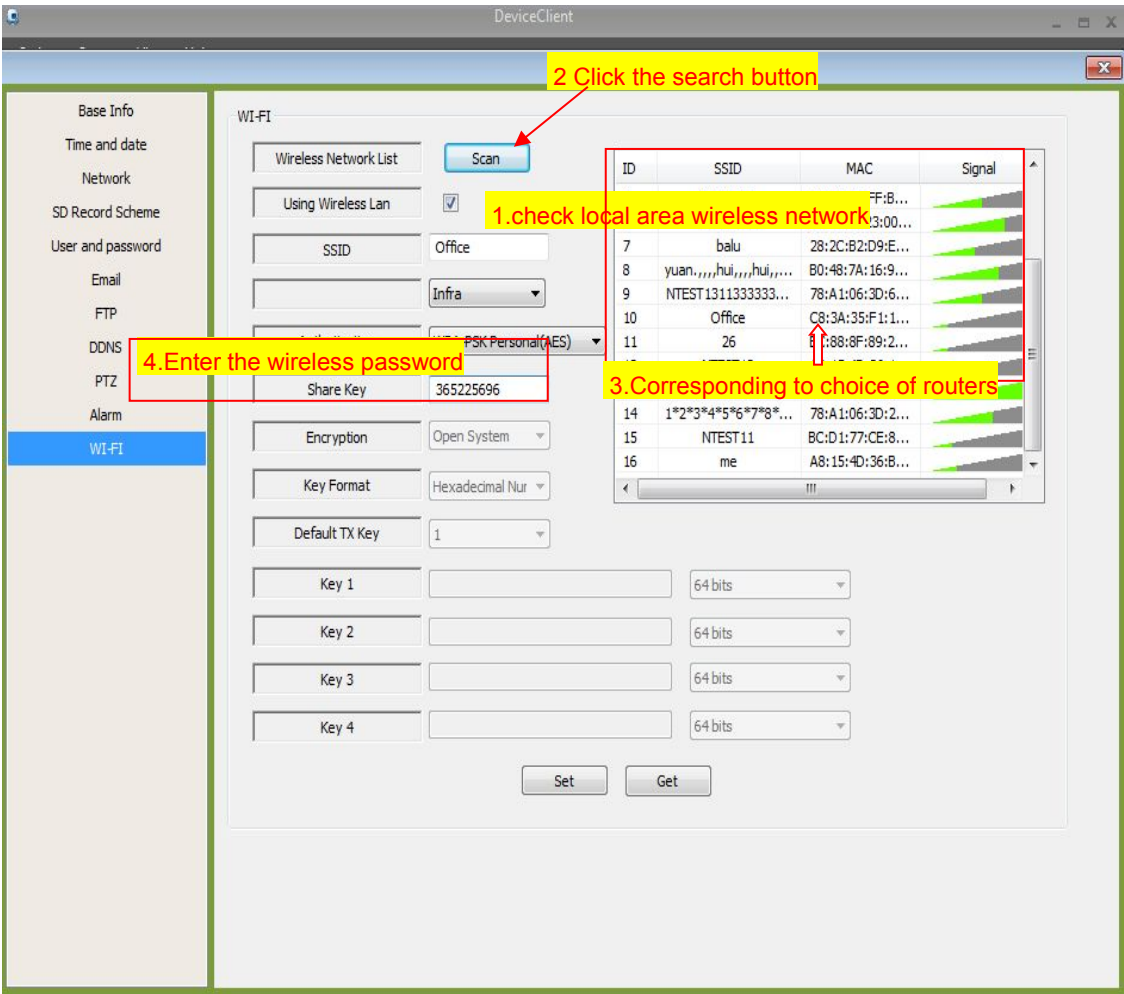
Set

Get

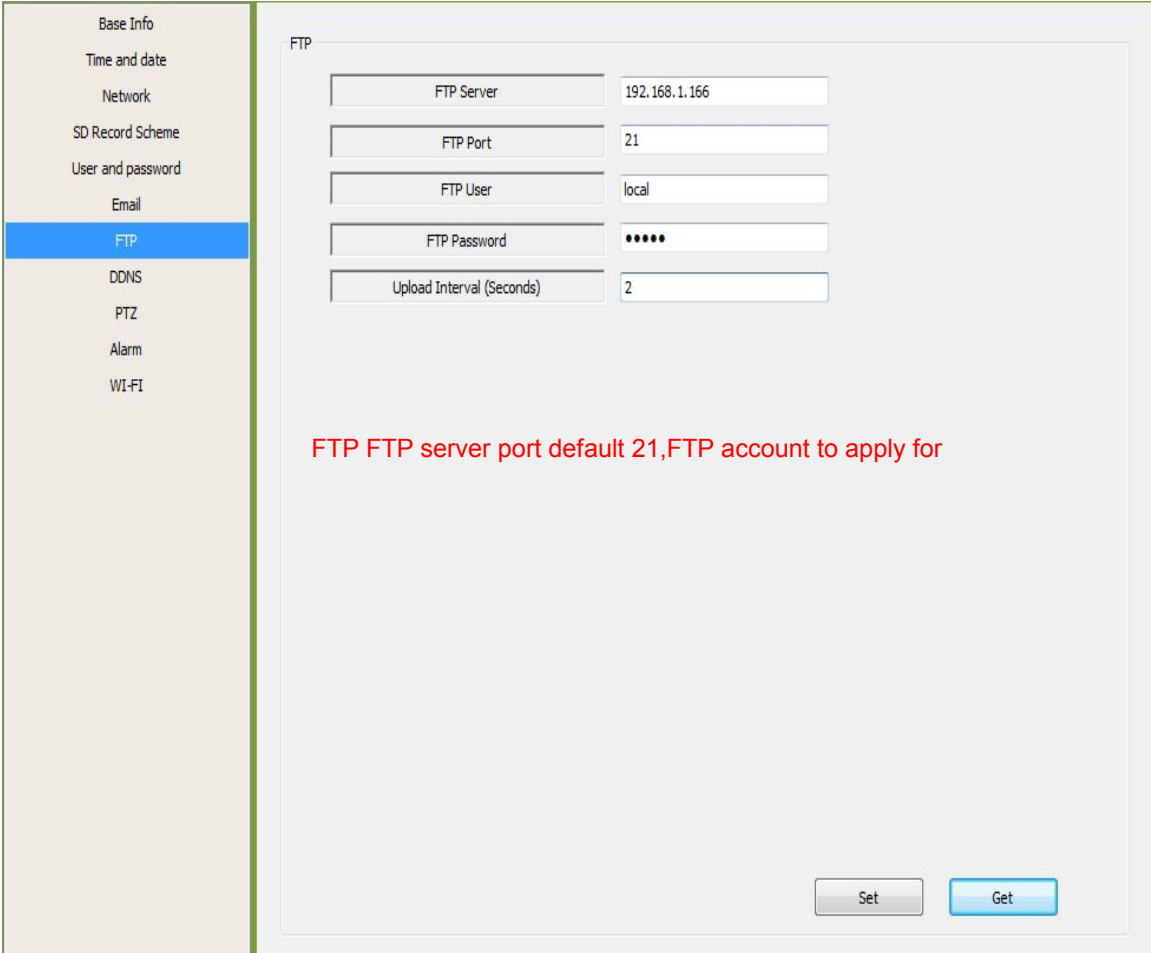
Smaller values of sensitivity more sensitive

Check settings,alam to send mail to a specific mailBox

5.7 WIFI setting



5.8 FTP Setting



5.9.DDNS setting

Base Info

Time and date

Network

SD Record Scheme

User and password

Email

FTP

DDNS

PTZ

Alarm

WI-FI

DDNS

DDNS Service

3322.org(dyndns)

DDNS User

gzyxt

DDNS Password

.....

DDNS Host

gzyxt.3322.org

DDNS or Proxy Server

DDNS or Proxy Port

80

default:80(1 - 65534)

DDNS mode

1

DDNS Status

3322 Succeed http://www.gzyxt.3322.org:80

proxy config is needed if the device is in China Mainland or HongKong

DDNS account registered address <http://www.3322.org>

1.Select the server

2.Enter sign up

3.Enter the password

4.Fill out an application domains

5.View the DDNS status

Set

Get

● PTZ setting

Base Info

Time and date

Network

SD Record Scheme

User and password

Email

FTP

DDNS

PTZ

Alarm

WI-FI

PTZ

against pre-bit

☐

Call Preset on boot

none

PTZ speed

Med

Cruise Views

none

Set

Get

Page 24

